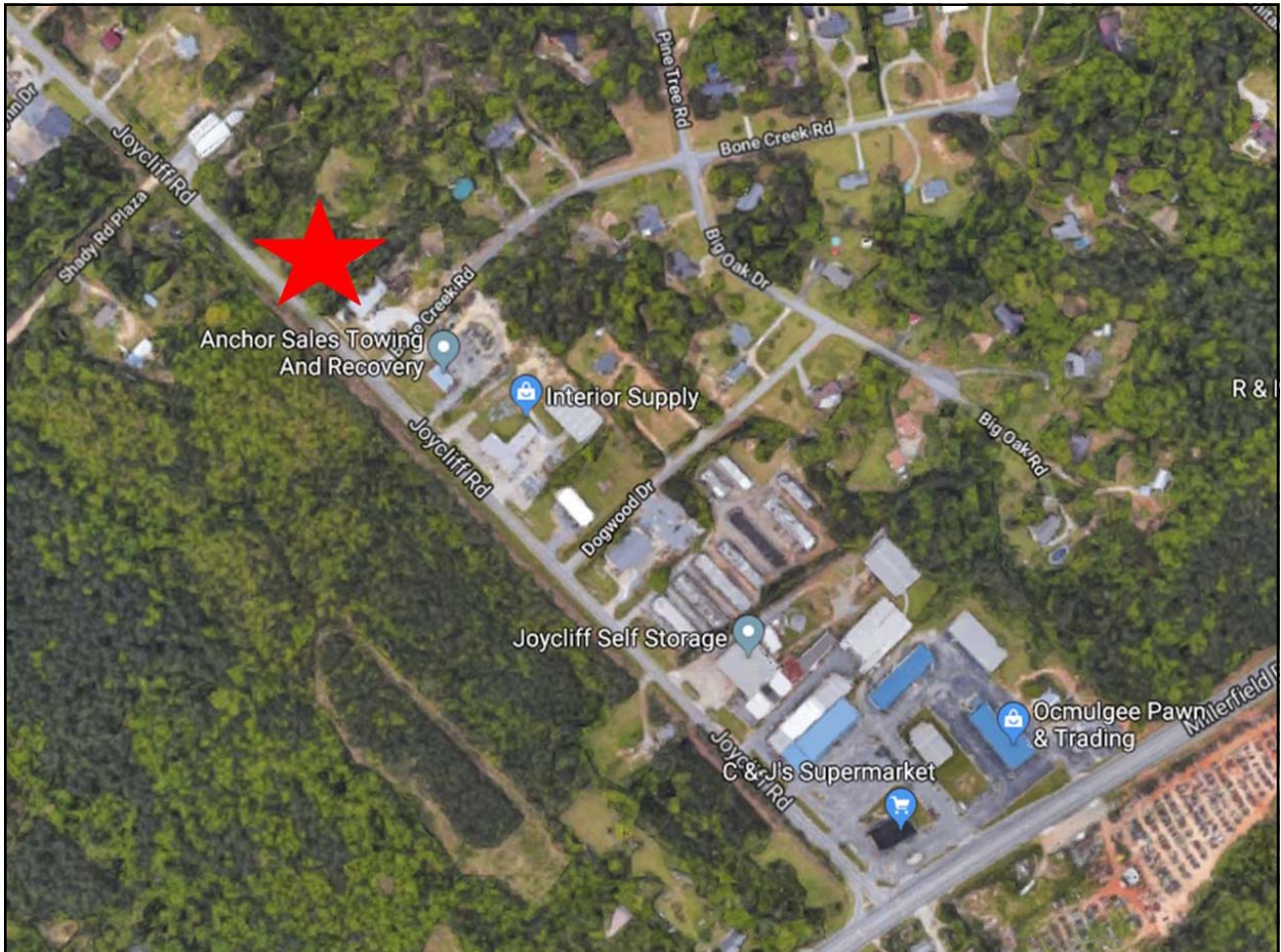


PRICE REDUCED

FOR SALE

**DEVELOPMENT SITE
1.62± ACRES**



**3015 Joycliff Road
Macon, Jones County, Georgia 31211**

CONTACT:

**THOMAS RHODES
EXCLUSIVE AGENT
trhodes@cbcworldwide.com
Office: (478) 746-8171
Cell: (706) 615-5233**

**Coldwell Banker Commercial
Eberhardt & Barry
990 Riverside Drive
Macon, Georgia 31201
(478) 746-8171**

REDUCED SALES PRICE: ~~\$17,900~~ \$15,000



PROPERTY OVERVIEW

3015 Joycliff Road
Macon, Jones County, Georgia 31211

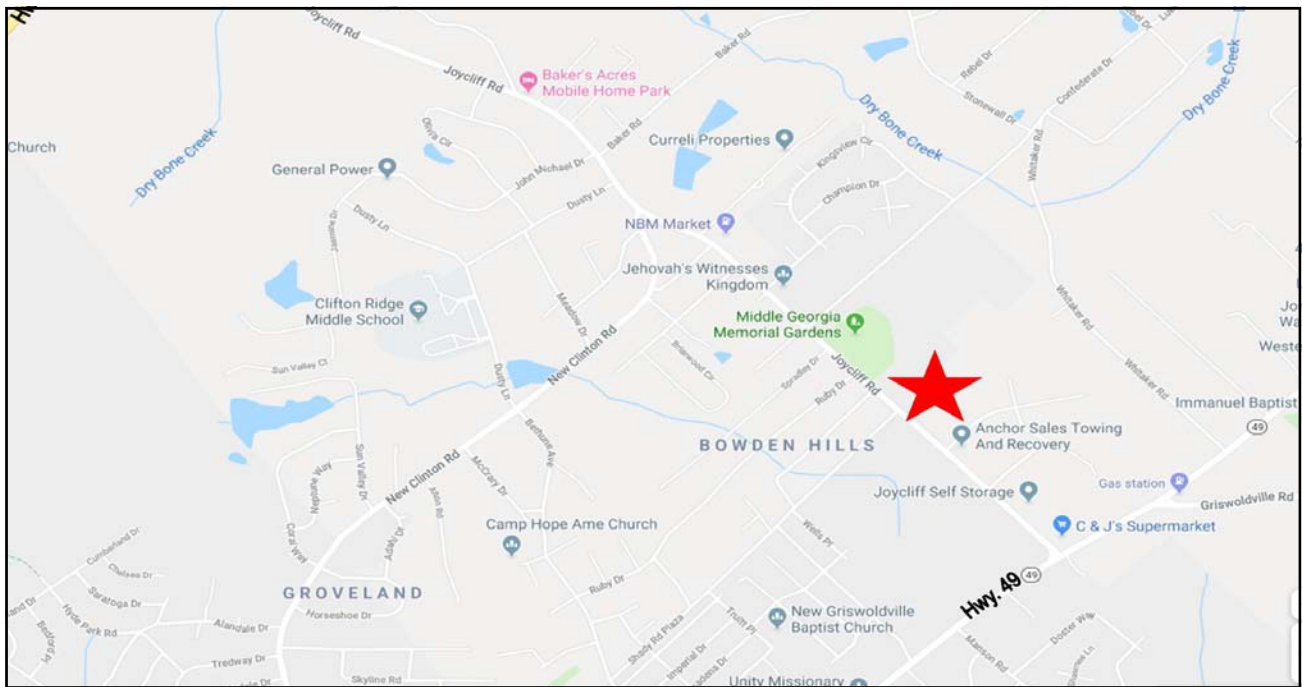
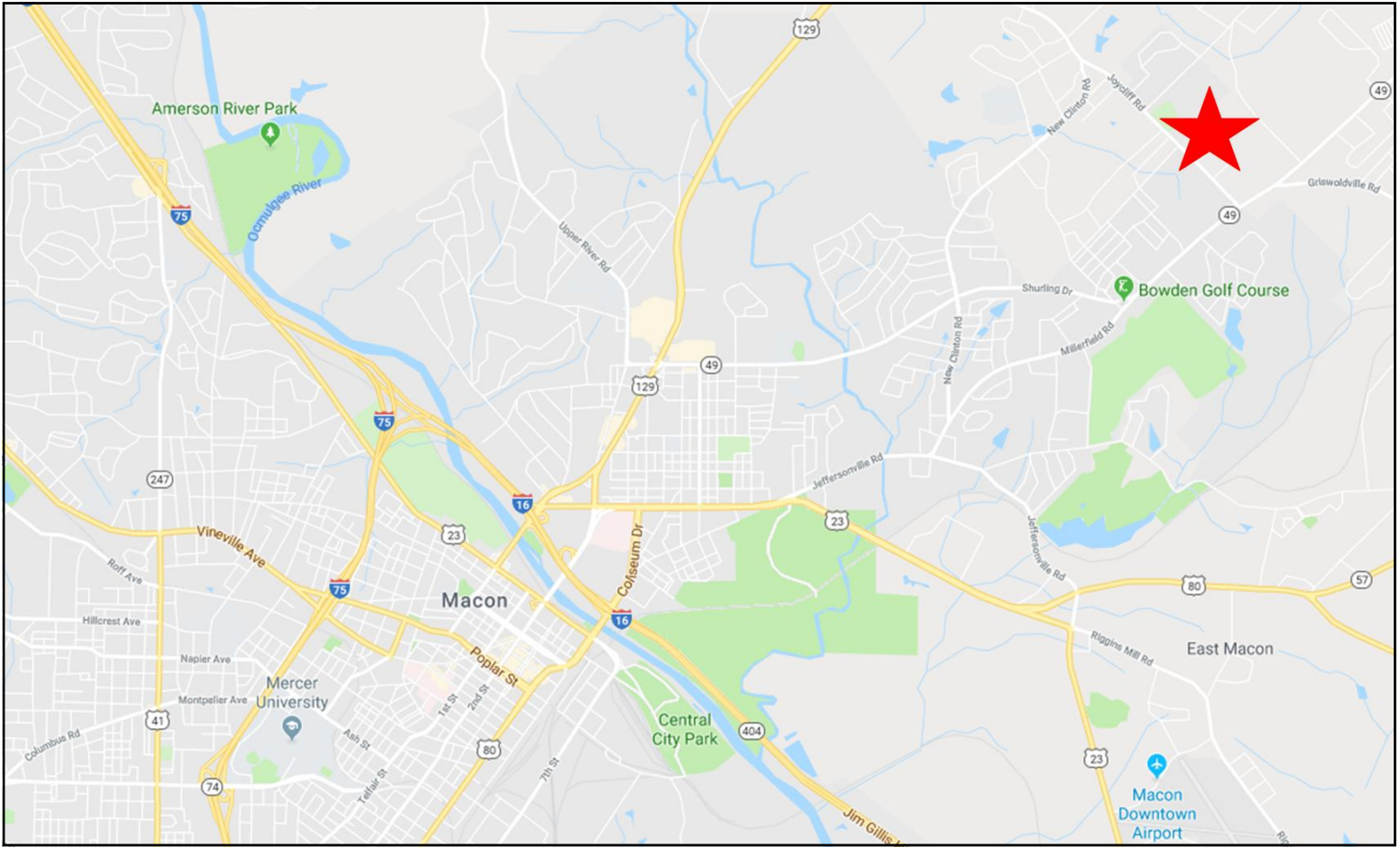


LOCATION:	Subject site is located off Highway 49.
LAND:	<ul style="list-style-type: none"> • 1.62± Acres Total • Three (3) separate parcels <ul style="list-style-type: none"> - J64D00008 - .77± Acres - J64D00008B - .62± Acres - J64E00010A - .23± Acres
TOPOGRAPHY:	Rolling
UTILITIES:	<ul style="list-style-type: none"> • Water: Jones County Water Department • Sewer: Septic System • Gas: Pipe Gas • Electric: Tri-County EMC • Telephone: Windstream
ZONING:	C2, General Commercial
REDUCED SALES PRICE: \$17,900 \$15,000	



MAPS

3015 Joycliff Road
Macon, Jones County, Georgia 31211



CBCMACON.COM
THOMAS RHODES
706.615.5233
trhodes@cbcworldwide.com





Demographic and Income Profile

Jones County, GA
 Jones County, GA (13169)
 Geography: County

Prepared by Esri

Summary	Census 2010	2019	2024
Population	28,669	29,394	30,054
Households	10,586	10,783	10,996
Families	7,973	8,038	8,163
Average Household Size	2.68	2.70	2.71
Owner Occupied Housing Units	8,530	8,704	8,961
Renter Occupied Housing Units	2,056	2,079	2,035
Median Age	38.6	40.3	41.0
Trends: 2019 - 2024 Annual Rate	Area	State	National
Population	0.45%	1.10%	0.77%
Households	0.39%	1.09%	0.75%
Families	0.31%	1.01%	0.68%
Owner HHs	0.58%	1.41%	0.92%
Median Household Income	2.55%	2.70%	2.70%

Households by Income	2019		2024	
	Number	Percent	Number	Percent
<\$15,000	942	8.7%	742	6.7%
\$15,000 - \$24,999	1,279	11.9%	1,125	10.2%
\$25,000 - \$34,999	957	8.9%	859	7.8%
\$35,000 - \$49,999	1,568	14.5%	1,513	13.8%
\$50,000 - \$74,999	1,937	18.0%	1,957	17.8%
\$75,000 - \$99,999	1,631	15.1%	1,784	16.2%
\$100,000 - \$149,999	1,828	17.0%	2,210	20.1%
\$150,000 - \$199,999	343	3.2%	450	4.1%
\$200,000+	298	2.8%	356	3.2%
Median Household Income	\$56,291		\$63,848	
Average Household Income	\$71,444		\$80,912	
Per Capita Income	\$26,221		\$29,615	

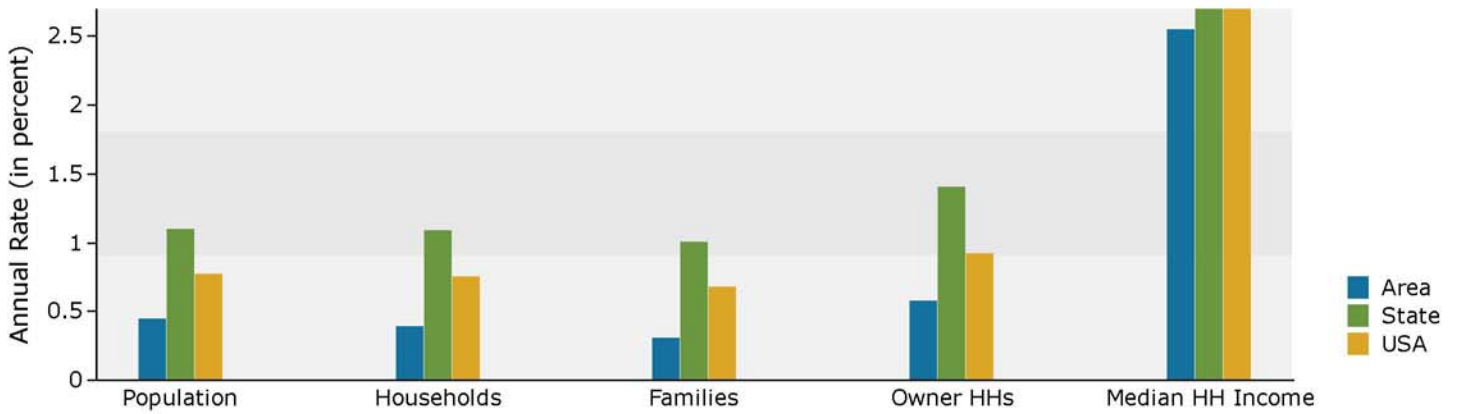
Population by Age	Census 2010		2019		2024	
	Number	Percent	Number	Percent	Number	Percent
0 - 4	1,890	6.6%	1,752	6.0%	1,752	5.8%
5 - 9	2,027	7.1%	1,914	6.5%	1,904	6.3%
10 - 14	2,197	7.7%	1,959	6.7%	2,060	6.9%
15 - 19	2,103	7.3%	1,741	5.9%	1,873	6.2%
20 - 24	1,475	5.1%	1,625	5.5%	1,415	4.7%
25 - 34	3,250	11.3%	3,811	13.0%	3,739	12.4%
35 - 44	4,010	14.0%	3,588	12.2%	3,733	12.4%
45 - 54	4,497	15.7%	3,975	13.5%	3,782	12.6%
55 - 64	3,634	12.7%	4,168	14.2%	4,076	13.6%
65 - 74	2,201	7.7%	3,117	10.6%	3,444	11.5%
75 - 84	1,020	3.6%	1,338	4.6%	1,797	6.0%
85+	365	1.3%	406	1.4%	479	1.6%

Race and Ethnicity	Census 2010		2019		2024	
	Number	Percent	Number	Percent	Number	Percent
White Alone	20,989	73.2%	20,956	71.3%	21,095	70.2%
Black Alone	7,008	24.4%	7,457	25.4%	7,773	25.9%
American Indian Alone	63	0.2%	98	0.3%	116	0.4%
Asian Alone	187	0.7%	179	0.6%	181	0.6%
Pacific Islander Alone	3	0.0%	3	0.0%	3	0.0%
Some Other Race Alone	103	0.4%	180	0.6%	221	0.7%
Two or More Races	316	1.1%	521	1.8%	665	2.2%
Hispanic Origin (Any Race)	315	1.1%	601	2.0%	753	2.5%

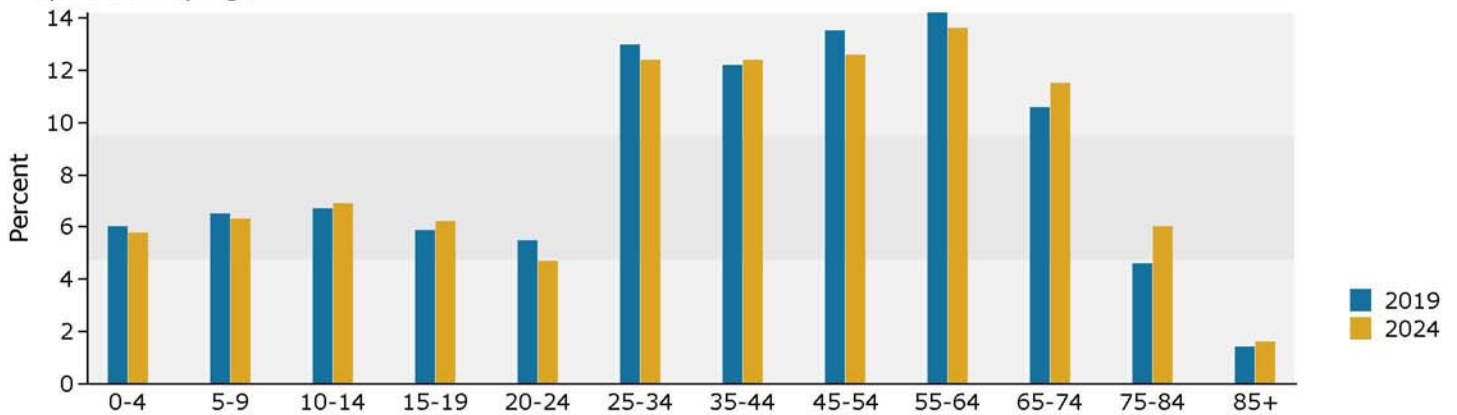
Data Note: Income is expressed in current dollars.

Source: U.S. Census Bureau, Census 2010 Summary File 1. Esri forecasts for 2019 and 2024.

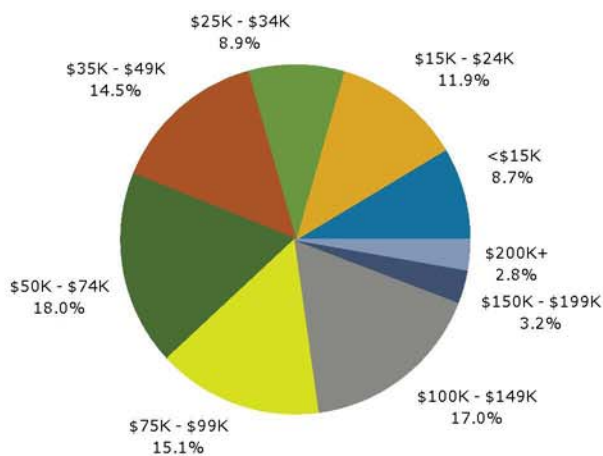
Trends 2019-2024



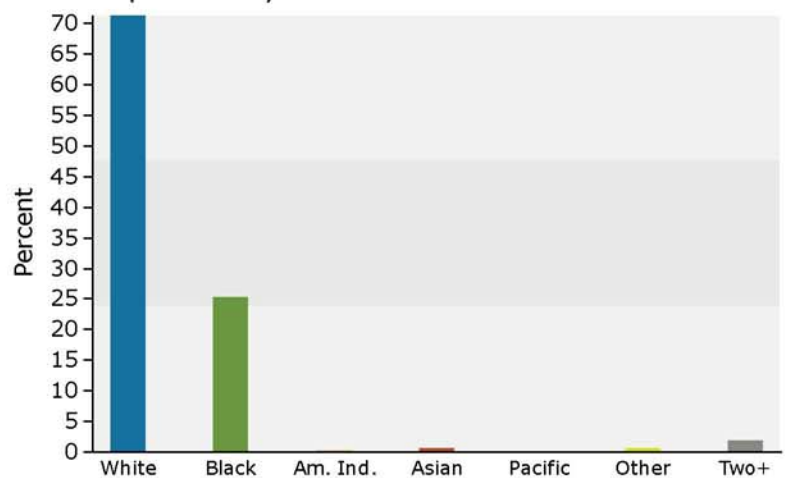
Population by Age



2019 Household Income



2019 Population by Race



2019 Percent Hispanic Origin: 2.0%

Source: U.S. Census Bureau, Census 2010 Summary File 1. Esri forecasts for 2019 and 2024.