

LEASE

MEDICAL OFFICE SUITE

446 POPLAR STREET—MACON, BIBB COUNTY, GA 31201



MONTHLY LEASE RATE: \$2,392
FULL SERVICE
(EXCLUDES JANITORIAL)

LOCATION OVERVIEW

- Located in the middle of Macon's Central Business District at the corner of Poplar Street & Martin Luther King Jr. Blvd.; adjacent to Ocmulgee Physicians
- Served by Macon Transit Authority
- Walking distance to restaurants, shopping and banks
- Neighbors: Lofts @ Capricorn, Kudzu Seafood, Your Pie, Decadent Dessert Bar and Famous Mike's

PROPERTY OVERVIEW

- Suite 100: 1,794± SF Medical Office Space
 - Waiting room
 - Receptionist office
 - Three (3) private offices
 - Three (3) exam rooms
 - Break room
 - Storage room
 - One (1) restroom
- Five (5) reserved parking spaces for Staff
- Complimentary parking for patients / customers

STEPHANIE FOLSOM, CCIM
478.361.8259 Cell
stephanie@cbcworldwide.com

990 RIVERSIDE DRIVE • MACON, GA 31201 • 478.746.8171 • CBCMACON.COM



COLDWELL BANKER
COMMERCIAL
EBERHARDT & BARRY

Created 8/5/22

LEASE

MEDICAL OFFICE SUITE

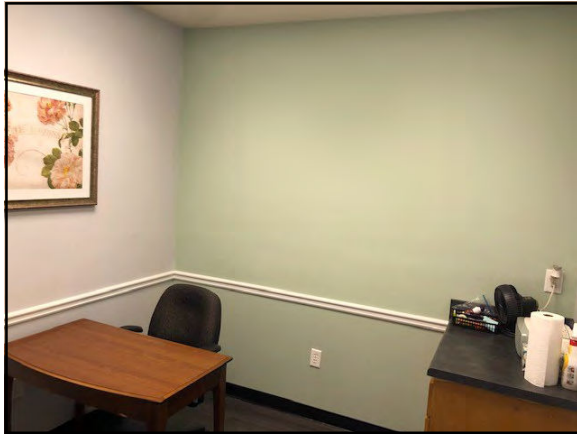
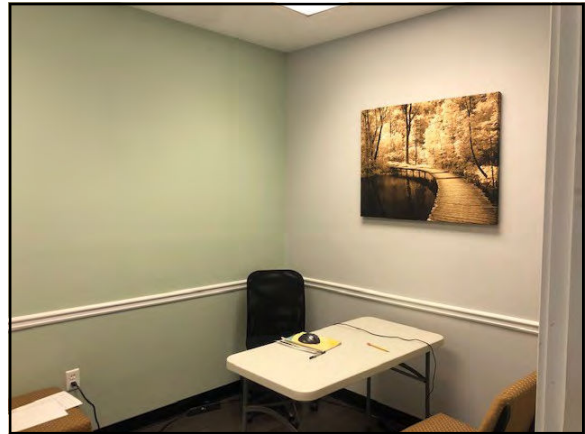
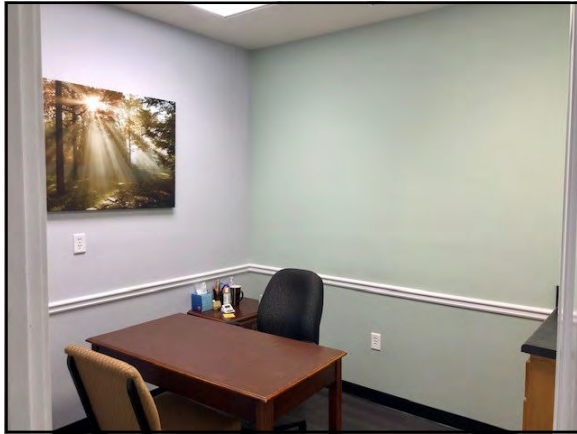
446 POPLAR STREET—MACON, BIBB COUNTY, GA 31201



LEASE

MEDICAL OFFICE SUITE

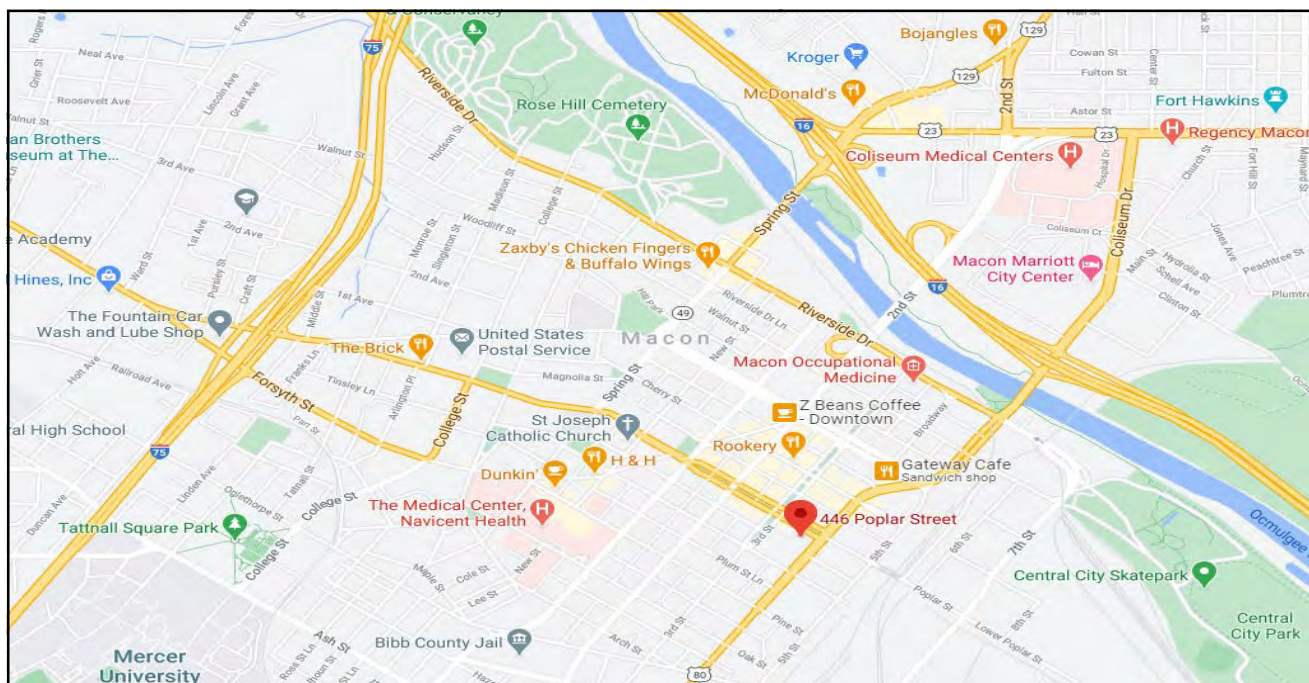
446 POPLAR STREET—MACON, BIBB COUNTY, GA 31201



LEASE

MEDICAL OFFICE SUITE

446 POPLAR STREET—MACON, BIBB COUNTY, GA 31201



4

STEPHANIE FOLSOM, CCIM
478.361.8259 Cell
stephanie@cbcworldwide.com

990 RIVERSIDE DRIVE • MACON, GA 31201 • 478.746.8171 • CBCMACON.COM



COLDWELL BANKER
COMMERCIAL
EBERHARDT & BARRY

DEMOGRAPHICS

Custom Template (Esri 2022)

Bibb County, GA 17
Bibb County, GA (13021)
Geography: County

Prepared by Esri

KEY FACTS

157,366

Population



2.4

Average
Household Size

37.8

Median Age

\$48,982

Median Household
Income

EDUCATION

12%

No High
School
Diploma



31%

High School
Graduate



29%

Some College



29%

Bachelor's/Grad/Prof
Degree

BUSINESS



6,634

Total Businesses



84,123

Total Employees

EMPLOYMENT



White Collar

66%



Blue Collar

19%



Services

15%

4.0%

Unemployment
Rate

INCOME



\$48,982

Median Household
Income



\$30,730

Per Capita Income



\$60,993

Median Net Worth

Households By Income

The largest group: <\$15,000 (15.3%)

The smallest group: \$200,000+ (5.1%)

Indicator ▲	Value	Diff	
<\$15,000	15.3%	+6.4%	
\$15,000 - \$24,999	9.5%	+1.8%	
\$25,000 - \$34,999	12.2%	+4.2%	
\$35,000 - \$49,999	13.7%	+2.2%	
\$50,000 - \$74,999	14.7%	-3.3%	
\$75,000 - \$99,999	11.7%	-1.6%	
\$100,000 - \$149,999	12.5%	-4.0%	
\$150,000 - \$199,999	5.3%	-2.2%	
\$200,000+	5.1%	-3.4%	

Bars show deviation from 13 (Georgia)

Source: This infographic contains data provided by Esri, Esri-Data Axle. The vintage of the data is 2022, 2027.