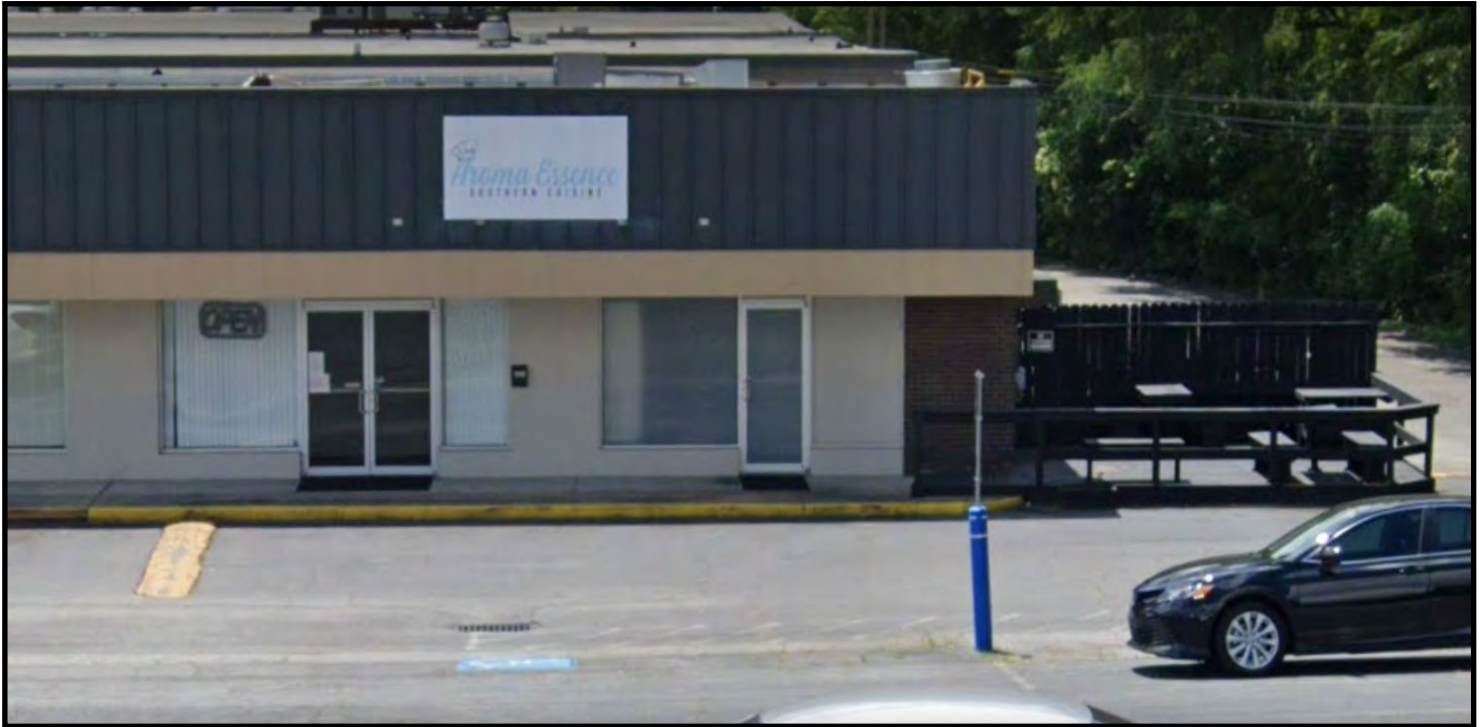


# LEASE

## WIMBISH MIDTOWN PLAZA SHOPPING CENTER

881 WIMBISH ROAD, MACON, GA 31210



**LEASE RATE: \$2,325.00/MONTH  
(INCLUDES CAM)**

### LOCATION OVERVIEW

- Located in North Macon at the busy signalized intersection of Riverside Drive and Wimbish Road
- 5 miles from Downtown Macon

### TENANT LIST

Mikata Japanese Steakhouse, Fitness Xtreme, Twin Cuts  
Barber Shop, Coast to Coast Medical Transportation

### PROPERTY OVERVIEW

- 1,975± SF Storefront Restaurant / Retail
  - Outside seating/ dining
- Formerly Aroma Essence Southern Cuisine
- Traffic Count: 24,400± AVG VPD
- Pylon signage and on façade of building
- Asphalt paved parking lot
- Zoned C4

**ARTHUR P. BARRY III**  
478.731.8000 Cell  
abarry@cbcworldwide.com

990 RIVERSIDE DRIVE • MACON, GA 31201 • 478.746.8171 • [CBCMACON.COM](http://CBCMACON.COM)



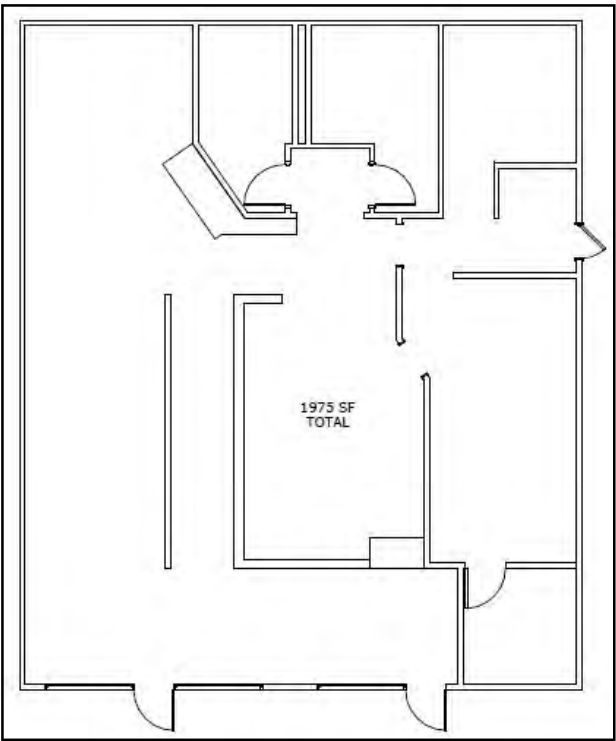
**COLDWELL BANKER  
COMMERCIAL**  
EBERHARDT & BARRY

Created 11/15/23

# LEASE

## WIMBISH MIDTOWN PLAZA SHOPPING CENTER

881 WIMBISH ROAD, MACON, GA 31210

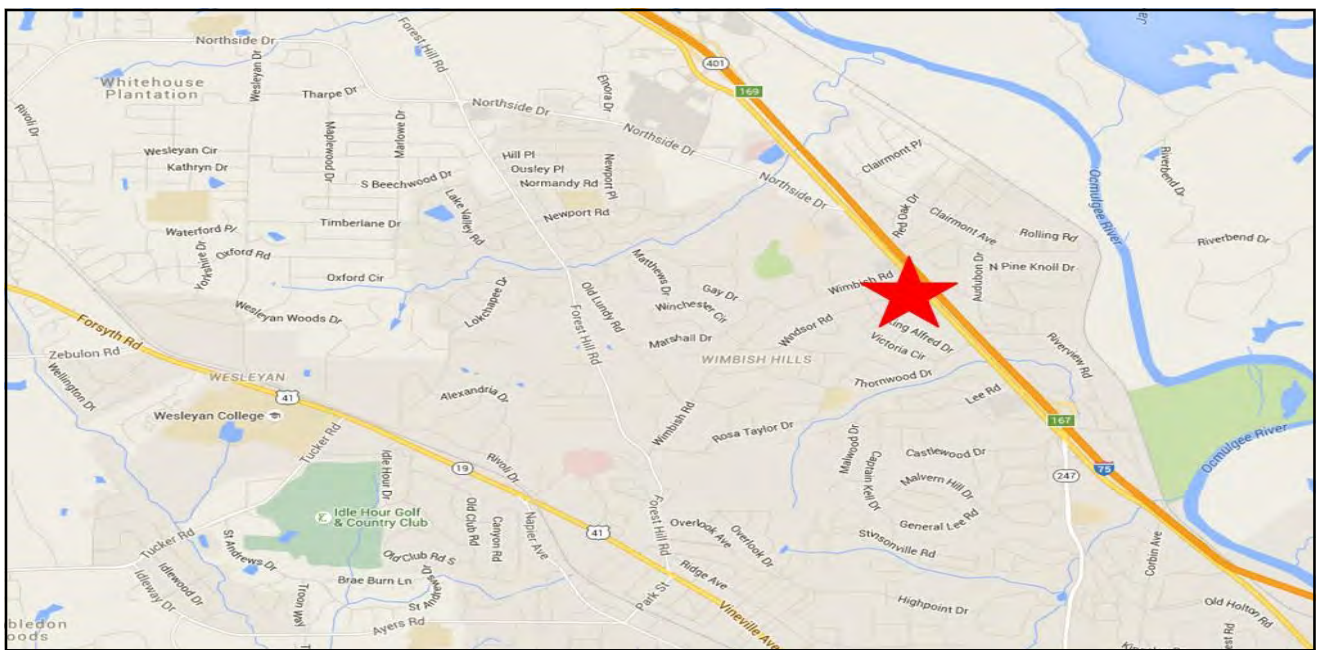




# LEASE

## WIMBISH MIDTOWN PLAZA SHOPPING CENTER

881 WIMBISH ROAD, MACON, GA 31210



3

ARTHUR P. BARRY III  
478.731.8000 Cell  
abarry@cbcworldwide.com



990 RIVERSIDE DRIVE • MACON, GA 31201 • 478.746.8171 • CBCMACON.COM



# LEASE

## WIMBISH MIDTOWN PLAZA SHOPPING CENTER

881 WIMBISH ROAD, MACON, GA 31210

### DEMOGRAPHICS - ONE MILE

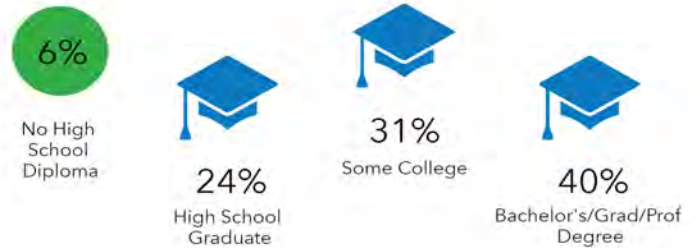
887 Wimbish Rd, Macon, Georgia, 31210 (1 mile)  
887 Wimbish Rd, Macon, Georgia, 31210  
Ring of 1 mile

Prepared by Esri  
Latitude: 32.88502  
Longitude: -83.67400

#### KEY FACTS



#### EDUCATION



#### BUSINESS



#### EMPLOYMENT



#### INCOME



#### 2023 Households By Income (Esri)

The largest group: \$50,000 - \$74,999 (26.9%)

The smallest group: \$200,000+ (2.9%)

Indicator ▲	Value	Diff	
<\$15,000	7.6%	-9.2%	
\$15,000 - \$24,999	5.6%	-2.9%	
\$25,000 - \$34,999	7.5%	-3.9%	
\$35,000 - \$49,999	11.0%	-2.3%	
\$50,000 - \$74,999	26.9%	+11.5%	
\$75,000 - \$99,999	17.5%	+6.7%	
\$100,000 - \$149,999	16.4%	+2.1%	
\$150,000 - \$199,999	4.5%	+0.2%	
\$200,000+	2.9%	-2.4%	

Bars show deviation from 13021 (Bibb County)

Source: This infographic contains data provided by Esri, Esri-Data Axle. The vintage of the data is 2023, 2028.

# LEASE

## WIMBISH MIDTOWN PLAZA SHOPPING CENTER

881 WIMBISH ROAD, MACON, GA 31210

### DEMOGRAPHICS - THREE MILE

887 Wimbish Rd, Macon, Georgia, 31210 (3 miles)  
887 Wimbish Rd, Macon, Georgia, 31210  
Ring of 3 miles

Prepared by Esri  
Latitude: 32.88502  
Longitude: -83.67400

#### KEY FACTS

31,075  
Population



2.3  
Average Household Size

39.4  
Median Age

\$59,522  
Median Household Income

#### EDUCATION

7%  
No High School Diploma



24%  
High School Graduate



27%  
Some College



42%  
Bachelor's/Grad/Prof Degree

#### BUSINESS



1,424  
Total Businesses



13,899  
Total Employees

#### EMPLOYMENT



White Collar

67%



Blue Collar

19%



Services

14%

4.4%  
Unemployment Rate

#### INCOME



\$59,522  
Median Household Income



\$37,999  
Per Capita Income



\$95,509  
Median Net Worth

#### 2023 Households By Income (Esri)

The largest group: \$50,000 - \$74,999 (20.4%)

The smallest group: \$150,000 - \$199,999 (4.9%)

Indicator ▲	Value	Diff	
<\$15,000	11.6%	-5.2%	
\$15,000 - \$24,999	6.7%	-1.8%	
\$25,000 - \$34,999	10.8%	-0.6%	
\$35,000 - \$49,999	11.0%	-2.3%	
\$50,000 - \$74,999	20.4%	+5.0%	
\$75,000 - \$99,999	12.2%	+1.4%	
\$100,000 - \$149,999	15.7%	+1.4%	
\$150,000 - \$199,999	4.9%	+0.6%	
\$200,000+	6.6%	+1.3%	

Bars show deviation from 13021 (Bibb County)

Source: This infographic contains data provided by Esri, Esri-Data Axle. The vintage of the data is 2023, 2028.

# LEASE

## WIMBISH MIDTOWN PLAZA SHOPPING CENTER

881 WIMBISH ROAD, MACON, GA 31210

### DEMOGRAPHICS - FIVE MILE

887 Wimbish Rd, Macon, Georgia, 31210 (5 miles)  
887 Wimbish Rd, Macon, Georgia, 31210  
Ring of 5 miles

Prepared by Esri  
Latitude: 32.88502  
Longitude: -83.67400

#### KEY FACTS

83,510

Population



Average  
Household Size

37.4

Median Age

\$46,844

Median Household  
Income

#### EDUCATION

12%

No High  
School  
Diploma



28%

High School  
Graduate



26%

Some College



34%

Bachelor's/Grad/Prof  
Degree

#### BUSINESS



4,420

Total Businesses



57,004

Total Employees

#### EMPLOYMENT



White Collar

66%



Blue Collar

17%



Services

17%

5.1%

Unemployment  
Rate

#### INCOME



\$46,844

Median Household  
Income



\$32,869

Per Capita Income



\$36,696

Median Net Worth

#### 2023 Households By Income (Esri)

The largest group: <\$15,000 (19.7%)

The smallest group: \$150,000 - \$199,999 (4.2%)

Indicator ▲	Value	Diff	
<\$15,000	19.7%	+2.9%	
\$15,000 - \$24,999	8.7%	+0.2%	
\$25,000 - \$34,999	11.4%	0	
\$35,000 - \$49,999	12.3%	-1.0%	
\$50,000 - \$74,999	15.4%	0	
\$75,000 - \$99,999	10.3%	-0.5%	
\$100,000 - \$149,999	11.7%	-2.6%	
\$150,000 - \$199,999	4.2%	-0.1%	
\$200,000+	6.4%	+1.1%	

Bars show deviation from

13021 (Bibb County)