



**152 Spring Street**

**Downtown Macon, Bibb County, Georgia 31201**

**LEASE**



- Located downtown Macon between Riverside Drive & Walnut Street
- Great visibility
- **Suite “B” - 2,800± SF Storefront Retail / Office**
- Average Daily Traffic Count: 9,600± vehicles per day
- Signage: Possible business signage on façade and monument sign
- Parking: Eight (8) parking spaces directly in front of building; additional parking in rear
- Zoned CBD-2
- Tenant pays water/sewer and electricity.
- Landlord pays taxes and property/casualty insurance.

---

**MONTHLY LEASE RATE: \$2,000**

---

**CBCMACON.COM**

**MIKI FOLSOM, CCIM**

**478.746.8171 OFFICE • 478.361.3036 CELL**

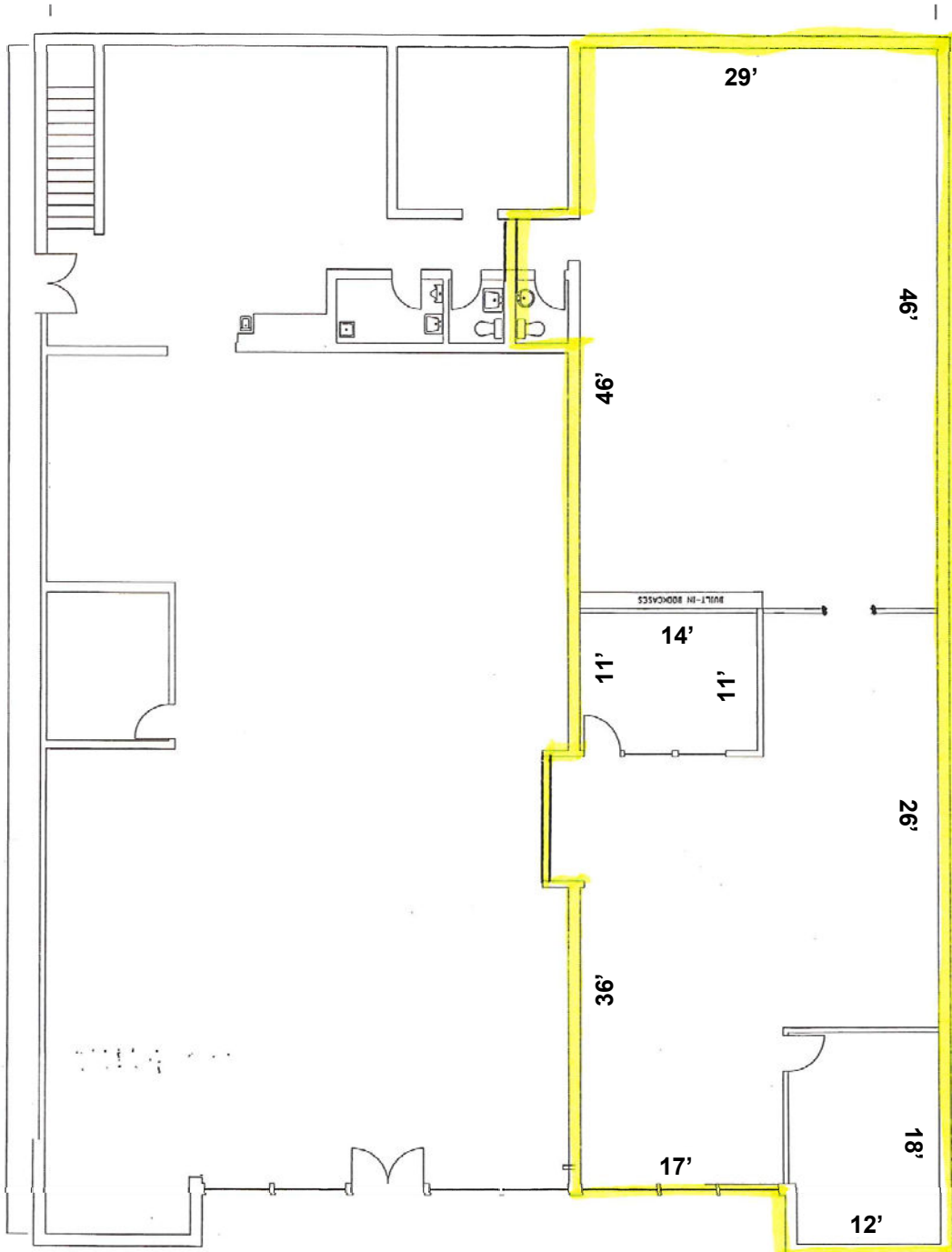
**mfolsom@cbcworldwide.com**





# FLOOR PLAN

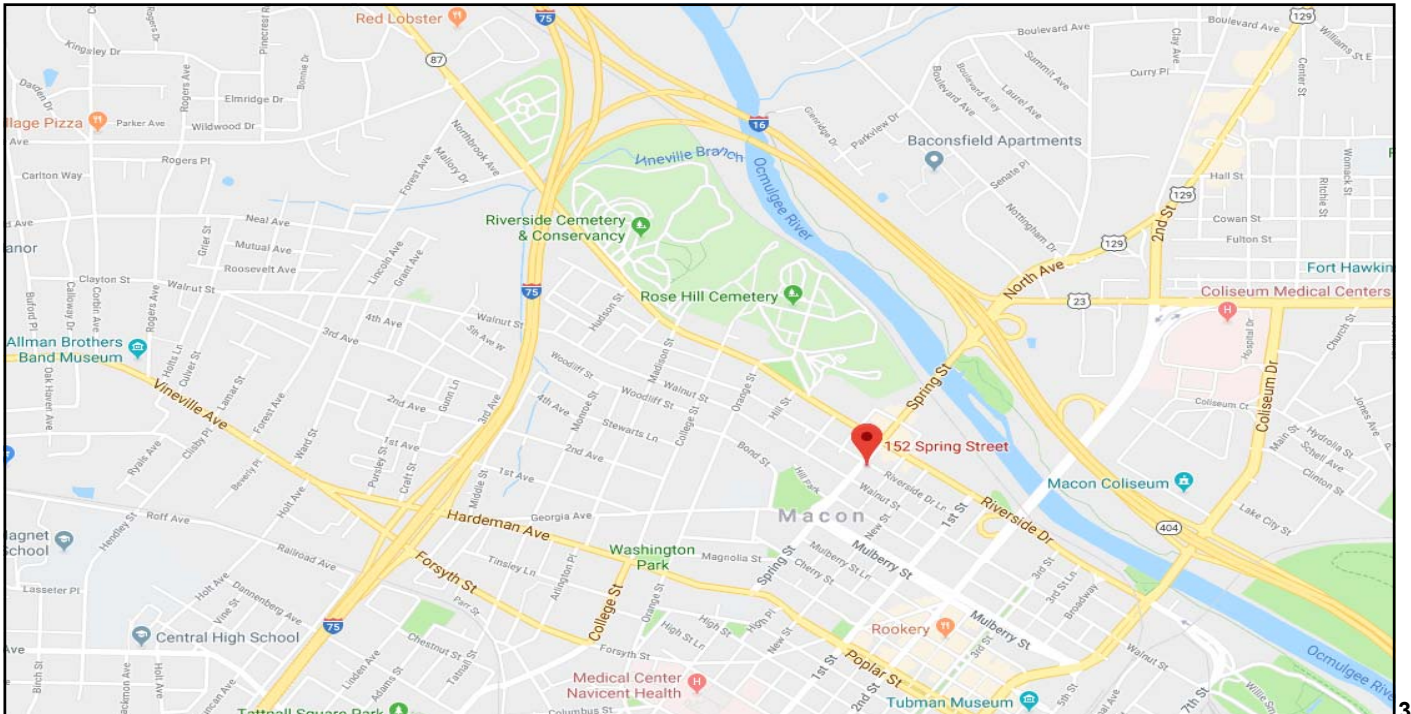
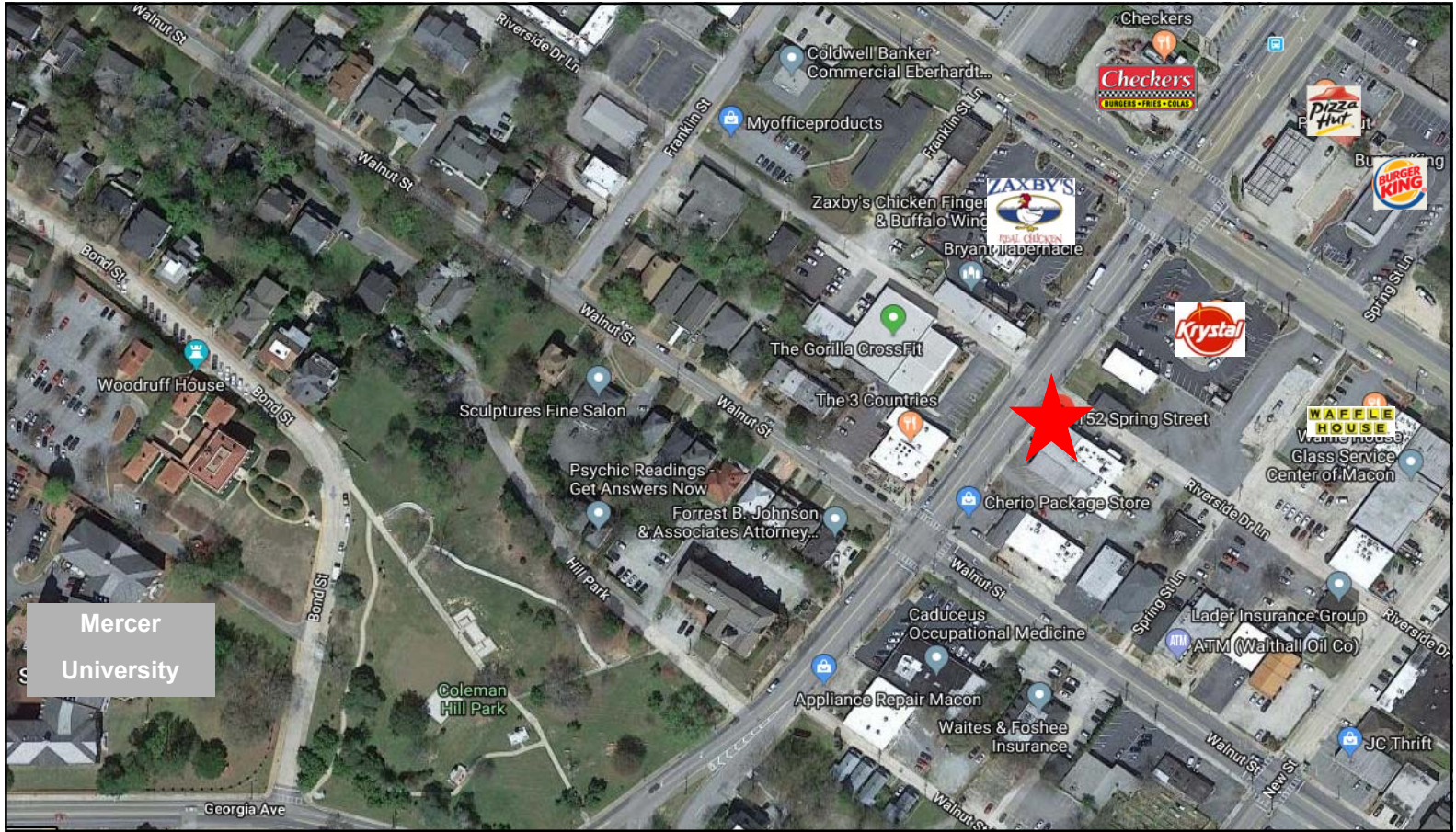
152-B Spring Street  
Macon, Bibb County, Georgia 31201





# MAPS

152-B Spring Street  
Macon, Bibb County, Georgia 31210



MIKI FOLSOM, CCIM

478.746.8171 OFFICE • 478.361.3036 CELL

[mfolsom@cbcworldwide.com](mailto:mfolsom@cbcworldwide.com)

**COLDWELL BANKER COMMERCIAL EBERHARDT & BARRY** 990 Riverside Drive Macon, GA 31201 (478) 746-8171



# DEMOGRAPHICS

152-B Spring Street  
Macon, Bibb County, Georgia 31210

## KEY FACTS

156,171

Population



Average Household Size

37.2

Median Age

\$40,970

Median Household Income

## EDUCATION

13%

No High School Diploma



31%

High School Graduate



28%

Some College



28%

Bachelor's/Grad/Prof Degree

## BUSINESS



6,494

Total Businesses



87,592

Total Employees

## EMPLOYMENT



White Collar

65%



Blue Collar

18%



Services

16%



Unemployment Rate

## INCOME



\$40,970

Median Household Income



\$24,379

Per Capita Income



\$24,540

Median Net Worth

## Households By Income

The largest group: <\$15,000 (19.3%)

The smallest group: \$150,000 - \$199,999 (3.3%)

Indicator ▲	Value	Difference	
<\$15,000	19.3%	+8.5%	
\$15,000 - \$24,999	12.8%	+3.6%	
\$25,000 - \$34,999	11.7%	+2.4%	
\$35,000 - \$49,999	13.0%	+0.3%	
\$50,000 - \$74,999	14.8%	-2.9%	
\$75,000 - \$99,999	12.2%	-0.3%	
\$100,000 - \$149,999	9.1%	-5.5%	
\$150,000 - \$199,999	3.3%	-2.9%	
\$200,000+	3.8%	-3.3%	