



PRICE REDUCED

FOR SALE OR LEASE



**Professional Office Building
5,215± Square Feet - .43± Acres**

**520 Professional Drive
Downtown Macon, Bibb County, Georgia 31201**

REDUCED SALES PRICE: ~~\$695,000~~ \$595,000

LEASE RATE: \$15.00/SF, NN

CBCMACON.COM

**MIKI FOLSOM, CCIM
478.361.3036**

mfolsom@cbcworldwide.com

**Brad Bloodworth
478.951.3712**

bradley.bloodworth@cbcworldwide.com

**COLDWELL
BANKER
COMMERCIAL
EBERHARDT & BARRY**

CBCWORLDWIDE.COM

COLDWELL BANKER COMMERCIAL EBERHARDT & BARRY 990 Riverside Drive Macon, GA 31201 (478) 746-8171

Revised 8/25/21



PROPERTY OVERVIEW

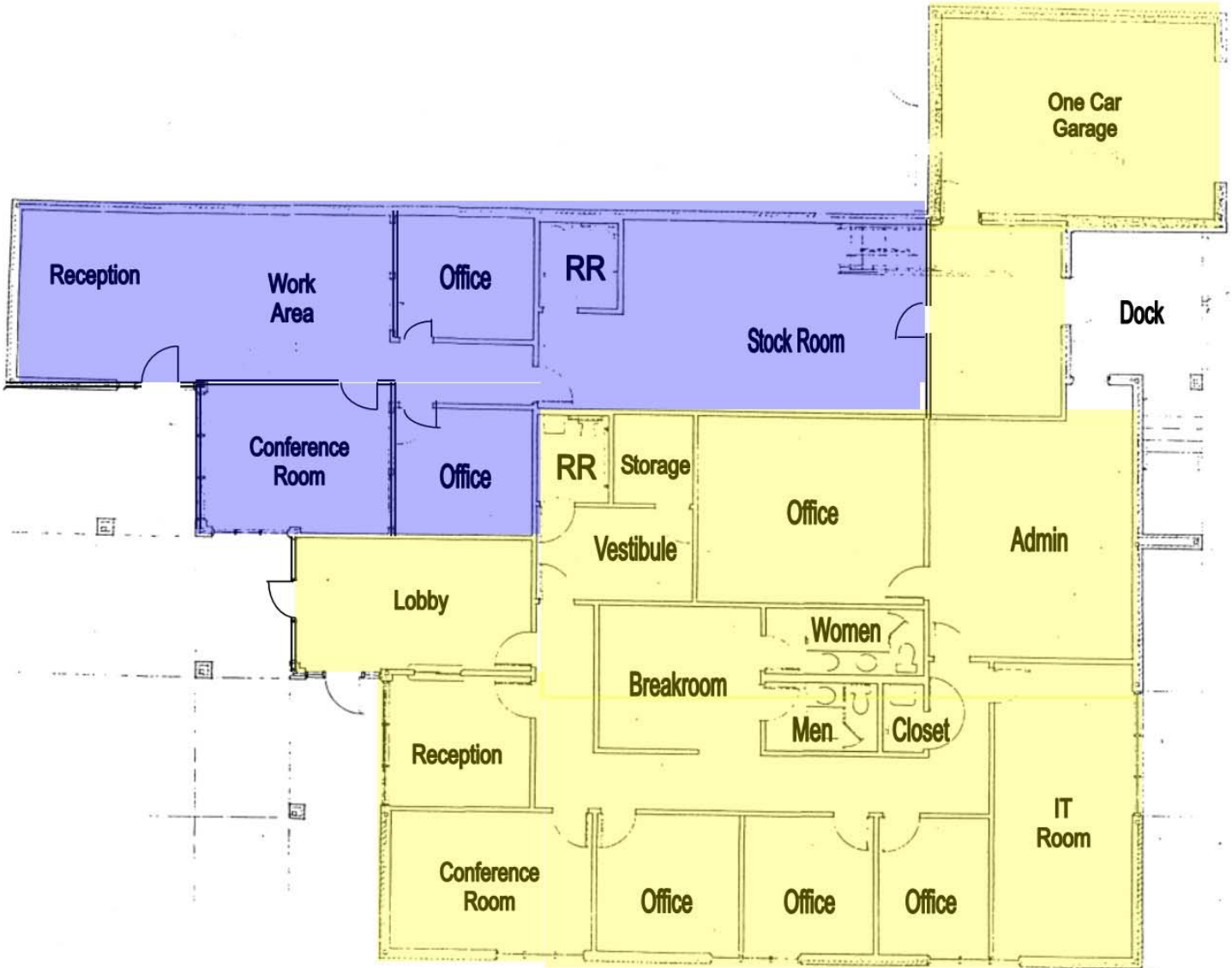
520 Professional Drive
 Macon, Bibb County, Georgia 31201

BUILDING INFORMATION:	<ul style="list-style-type: none"> • 5,215± SF Professional Office Building with Shared Dock • Currently two (2) suites: <ul style="list-style-type: none"> - <u>Suite 1: 3,651± SF</u> <ul style="list-style-type: none"> - Waiting area - Reception - Five (5) Private offices - Large conference room - Two (2) large work areas - Break room - Three (3) restrooms - File storage - Garage - <u>Suite 2: 1,570± SF</u> <ul style="list-style-type: none"> - Reception / Work area - One (1) private office - Conference room - File room - One (1) restroom
SITE INFORMATION:	<ul style="list-style-type: none"> • .43± Acres • 105.08' frontage on Professional Drive; 122.7' frontage on Hardeman Avenue • Two curb cuts (Professional Drive & Franks Lane) • Professional landscaping
YEAR BUILT:	1993
CONSTRUCTION:	Brick veneer, steel & concrete block
ROOF:	Asphalt Shingles
FLOORING:	Tile & carpet
CEILING/LIGHTING:	Acoustical tile ceilings with fluorescent fixtures.
HVAC:	Central Heat & Air
PARKING:	<ul style="list-style-type: none"> • 16 concrete parking spaces • 1 / 326 SF - Suite 1: 11 spaces Suite 2: 5 spaces
UTILITIES:	All public utilities serve the site.
ZONING:	C2
TAX BILL:	\$8,577.99 (2020)



FLOOR PLAN

520 Professional Drive
Macon, Bibb County, Georgia 31201



SUITE 2: 1,570± SF

SUITE 1: 3,651± SF

MIKI FOLSOM, CCIM
478.361.3036
mfolsom@cbcworldwide.com

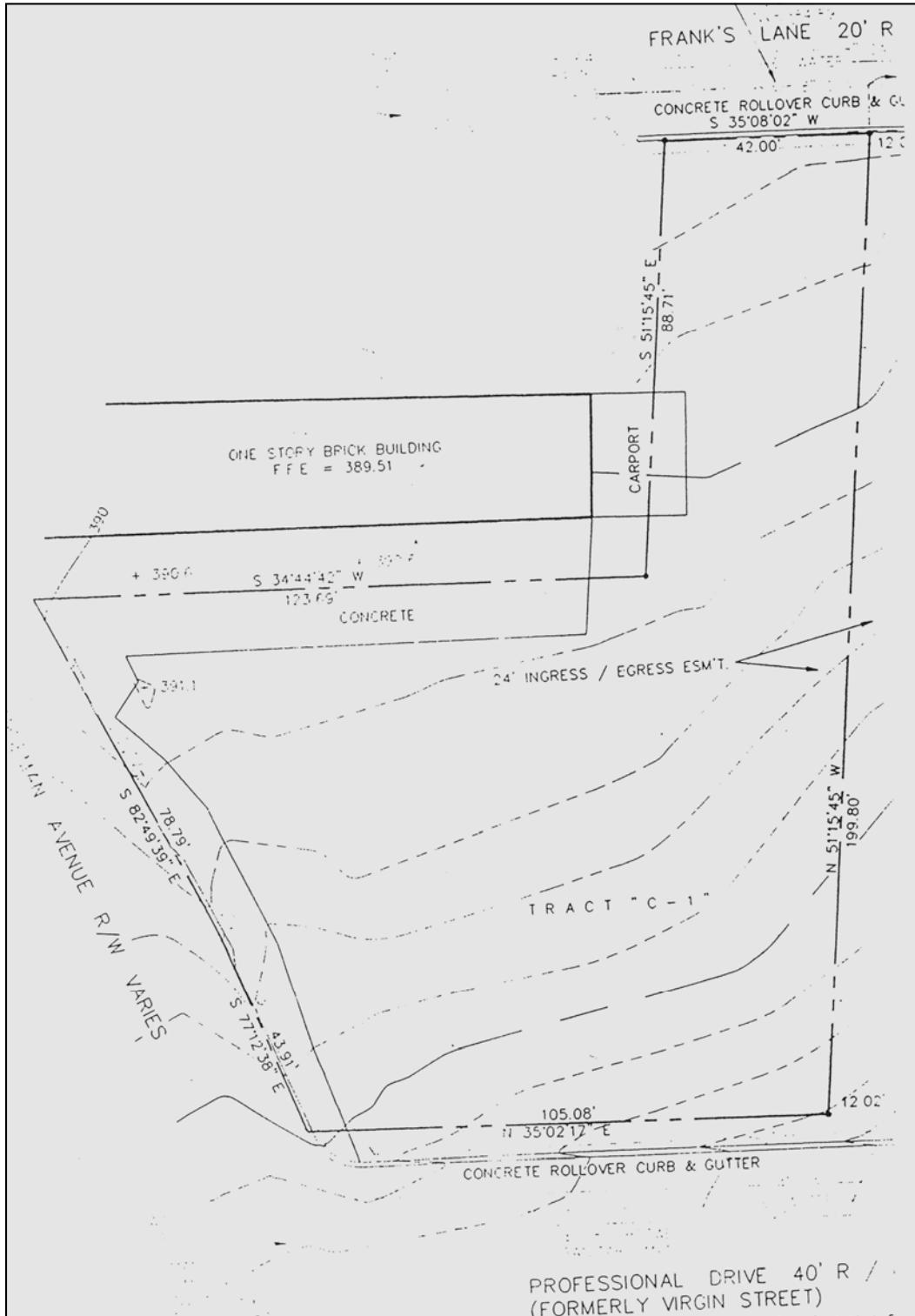
Brad Bloodworth
478.951.3712
bradley.bloodworth@cbcworldwide.com

CBCMACON.COM



PLAT

520 Professional Drive
Macon, Bibb County, Georgia 31201



MIKI FOLSOM, CCIM
478.361.3036
mfolsom@cbcworldwide.com

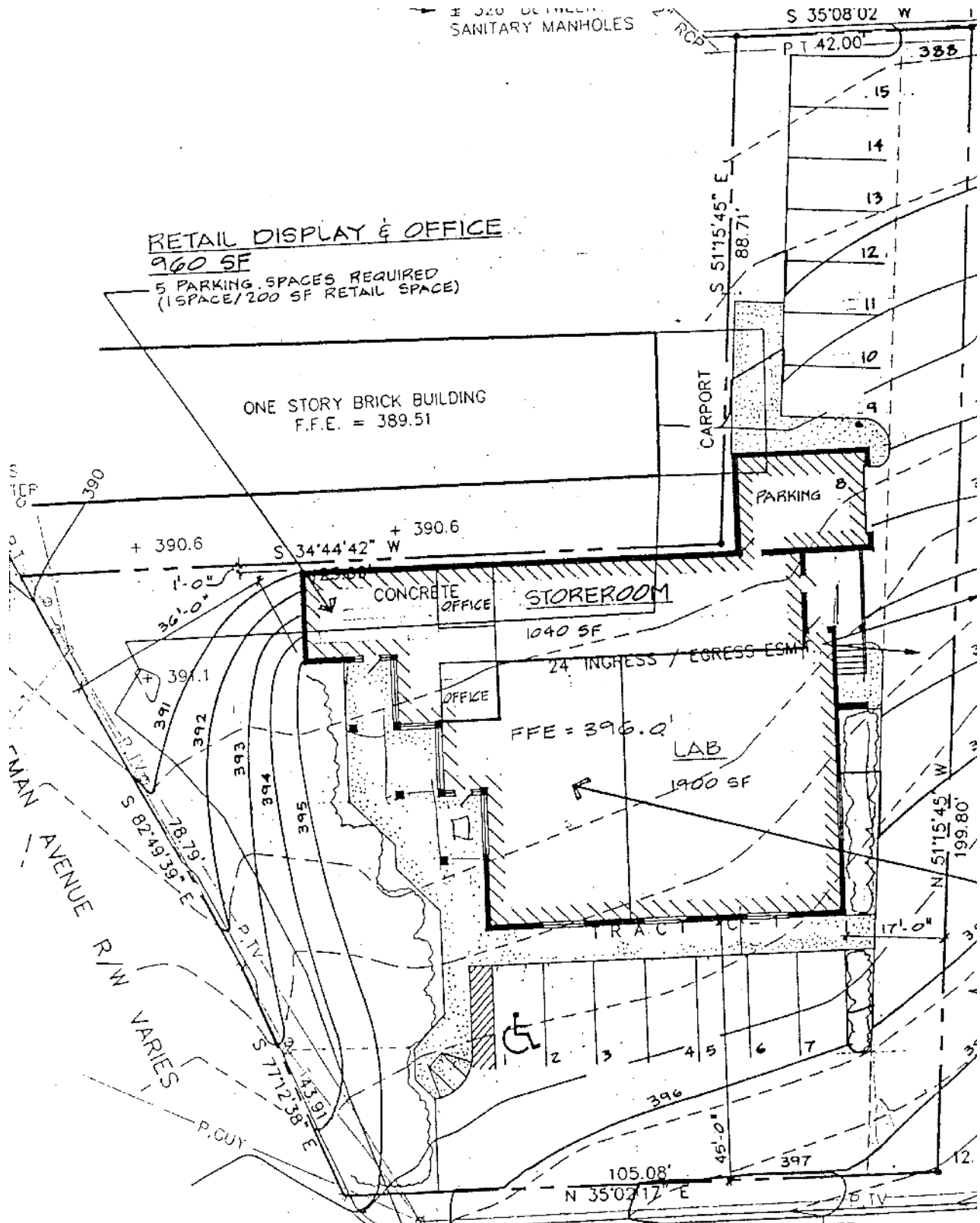
Brad Bloodworth
478.951.3712
bradley.bloodworth@cbcworldwide.com

CBCMACON.COM



SITE PLAN

520 Professional Drive
Macon, Bibb County, Georgia 31201



MIKI FOLSOM, CCIM
478.361.3036
mfolsom@cbcworldwide.com

Brad Bloodworth
478.951.3712
bradley.bloodworth@cbcworldwide.com

CBCMACON.COM



PARCEL MAP

520 Professional Drive
Macon, Bibb County, Georgia 31201



MIKI FOLSOM, CCIM
478.361.3036
mfolsom@cbcworldwide.com

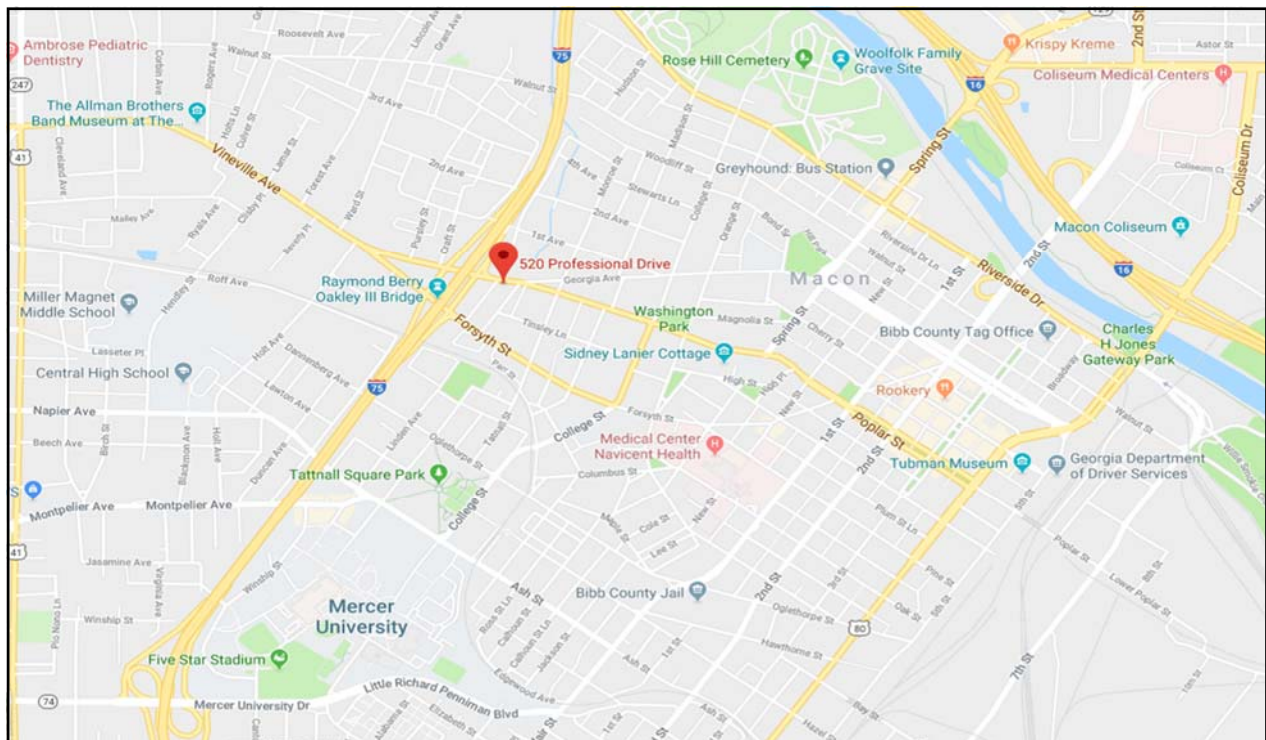
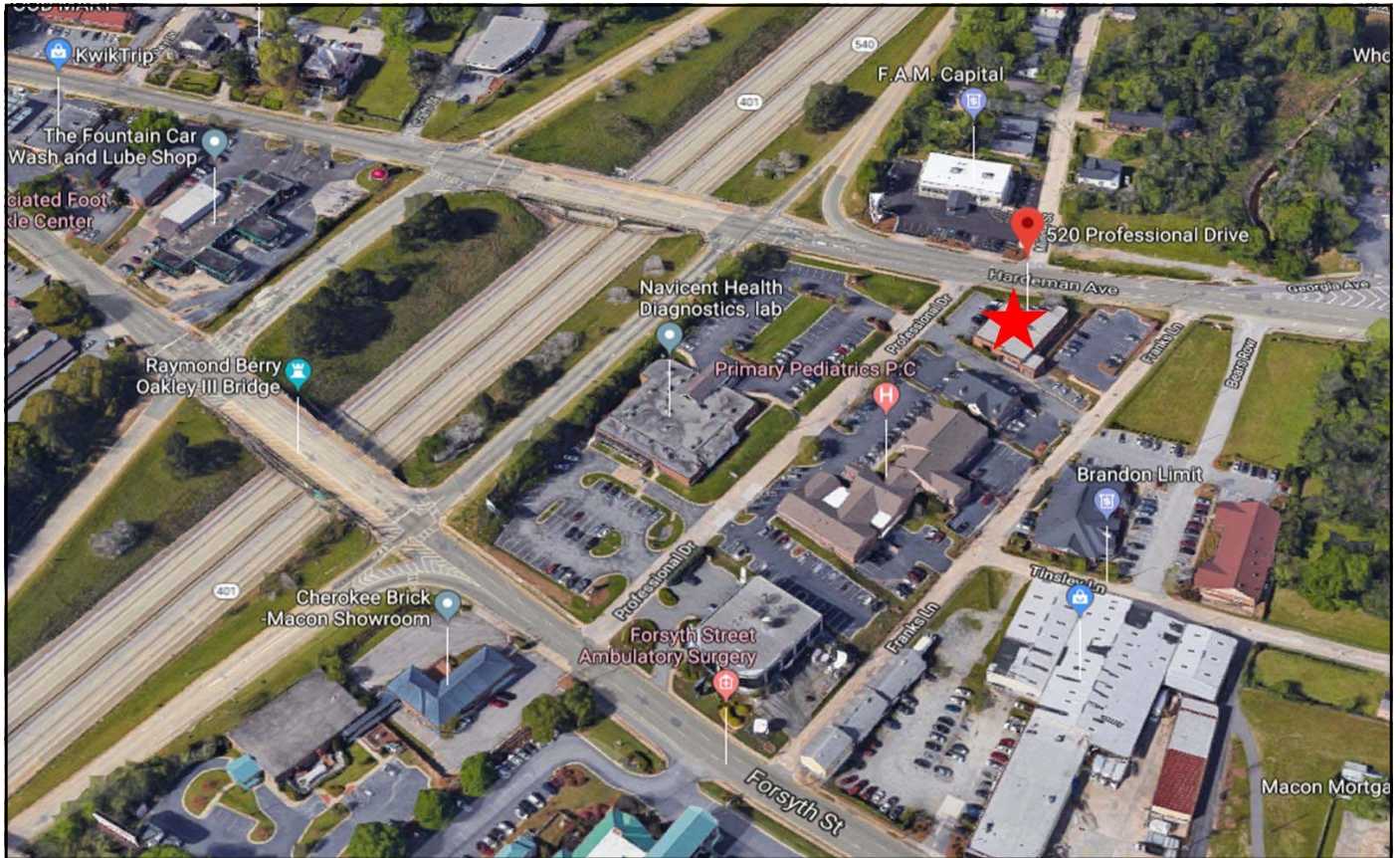
Brad Bloodworth
478.951.3712
bradley.bloodworth@cbcworldwide.com

CBCMACON.COM



MAPS

520 Professional Drive
Macon, Bibb County, Georgia 31201



MIKI FOLSOM, CCIM
478.361.3036
mfolsom@cbcworldwide.com

Brad Bloodworth
478.951.3712
bradley.bloodworth@cbcworldwide.com

CBCMACON.COM