

FOR LEASE

Warehouse

3043 N. Columbia Street  
Milledgeville, Baldwin County, Georgia 31061



EBERHARDT & BARRY



- 1,275± SF Warehouse
- Dry storage
- Double door access
- Covered dock with ramp and small drive-in door
- Topography: Level at road grade
- All utilities available to site.
- No Restroom Included

**LEASE RATE: \$649 PER MONTH**

**FOR MORE DETAILS CONTACT:**

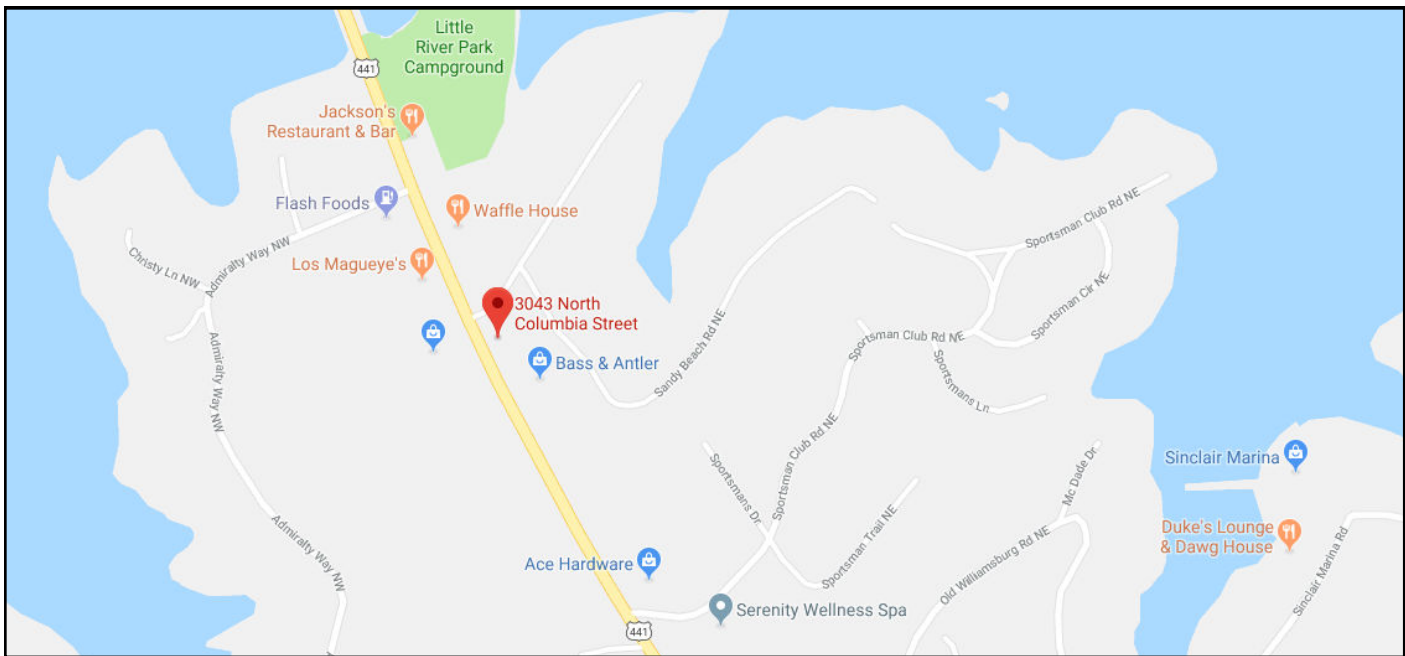
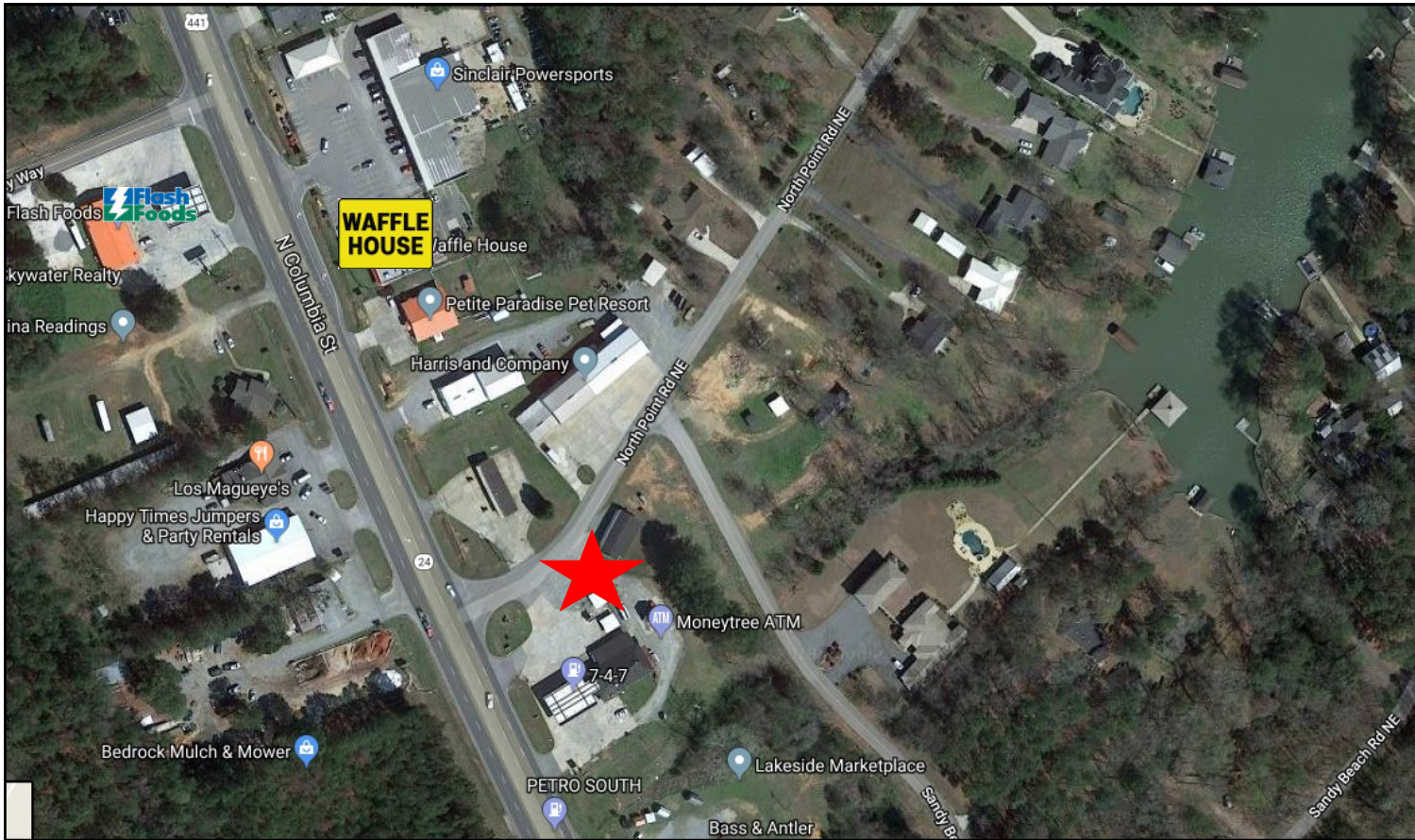
**EXCLUSIVE AGENTS:**

**PATRICK BARRY, IV**  
pbarry@cbcworldwide.com  
Phone : (478) 746-8171  
Cell : (478) 718-1806

**BRAD BLOODWORTH**  
bradley.bloodworth@cbcworldwide.com  
Phone: (478) 746-8171  
Cell: (478) 951-3712

**Coldwell Banker Commercial**  
**Eberhardt & Barry Inc.**  
**990 Riverside Drive**  
**Macon, Georgia 31201**  
**(800) 926-0990**







KEY FACTS

1,415  
Population



2.5  
Average Household Size

44.5  
Median Age

\$77,041  
Median Household Income

EDUCATION

7%  
No High School Diploma



27%  
High School Graduate



33%  
Some College



33%  
Bachelor's/Grad/Prof Degree

BUSINESS



63  
Total Businesses



291  
Total Employees

EMPLOYMENT

53%  
White Collar

23%  
Blue Collar

24%  
Services

2.1%  
Unemployment Rate

INCOME



\$77,041  
Median Household Income



\$32,415  
Per Capita Income



\$202,223  
Median Net Worth

Households By Income

The largest group: \$75,000 - \$99,999 (24.3%)

The smallest group: \$150,000 - \$199,999 (2.1%)

| Indicator ▲           | Value | Diff   |
|-----------------------|-------|--------|
| <\$15,000             | 4.9%  | -13.2% |
| \$15,000 - \$24,999   | 7.8%  | -5.9%  |
| \$25,000 - \$34,999   | 7%    | -2%    |
| \$35,000 - \$49,999   | 13.2% | +3.2%  |
| \$50,000 - \$74,999   | 14.3% | -4.6%  |
| \$75,000 - \$99,999   | 24.3% | +10%   |
| \$100,000 - \$149,999 | 23.8% | +12.7% |

Bars show deviation from Baldwin County

