

LEASE

INDUSTRIAL WAREHOUSE
167 STEEL ROAD
CORDELE, CRISP COUNTY, GEORGIA 31015



LEASE RATE: \$1,500 PER MONTH

PROPERTY OVERVIEW

- 14,000± SF Industrial Warehouse
 - One small office
 - Two (2) restrooms
 - One 10-ton bridge crane
- 20'± ceiling height
- Truck Loading:
 - One dock high door
 - Two (2) drive-in doors
- Up to 30 Acres
- Zoned Industrial
- All utilities available to the site.
- Owner pays property taxes.

LOCATION OVERVIEW

- Located 3/4 mile west of I-75, Exit 104, (Farmer's Market Road Exit)
- Neighbors consist of Cordele State Farmers Market, Stop & Go Convenience Store, Clark's Trailer Repair, Reames Concrete

HAL HARPER, CCIM
478.746.8171 Office • 478.951.3991 Cell
hharper@cbcworldwide.com
CBCMACON.COM



COLDWELL BANKER
COMMERCIAL
EBERHARDT & BARRY

Created 4/21/22

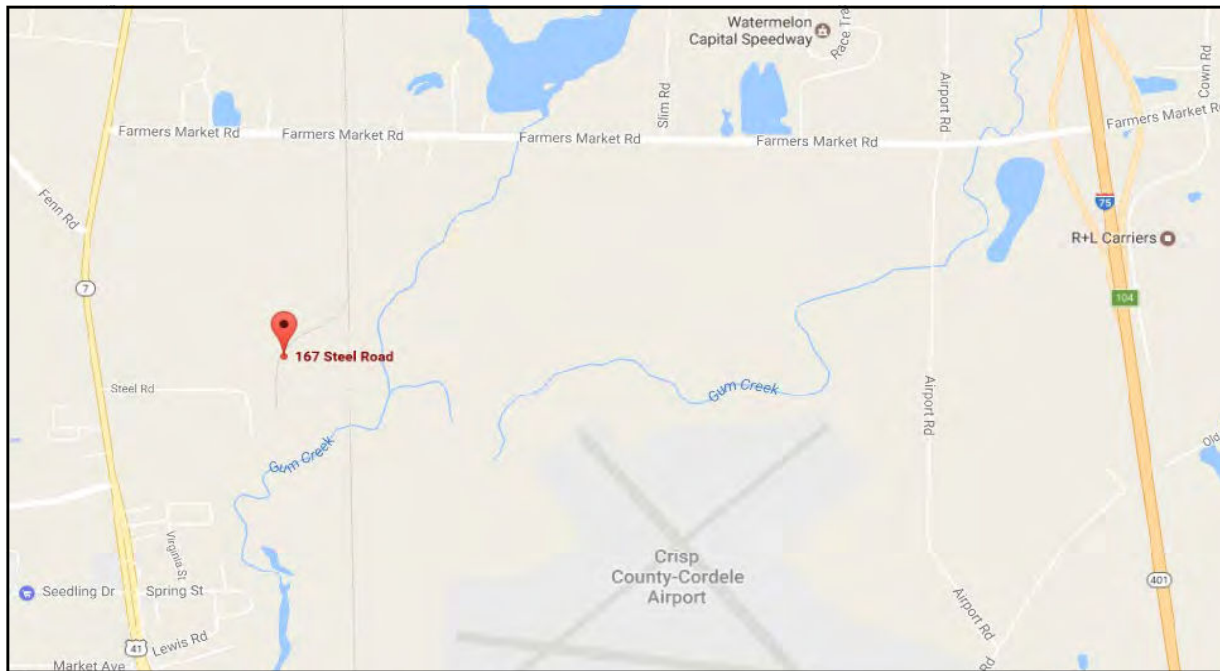
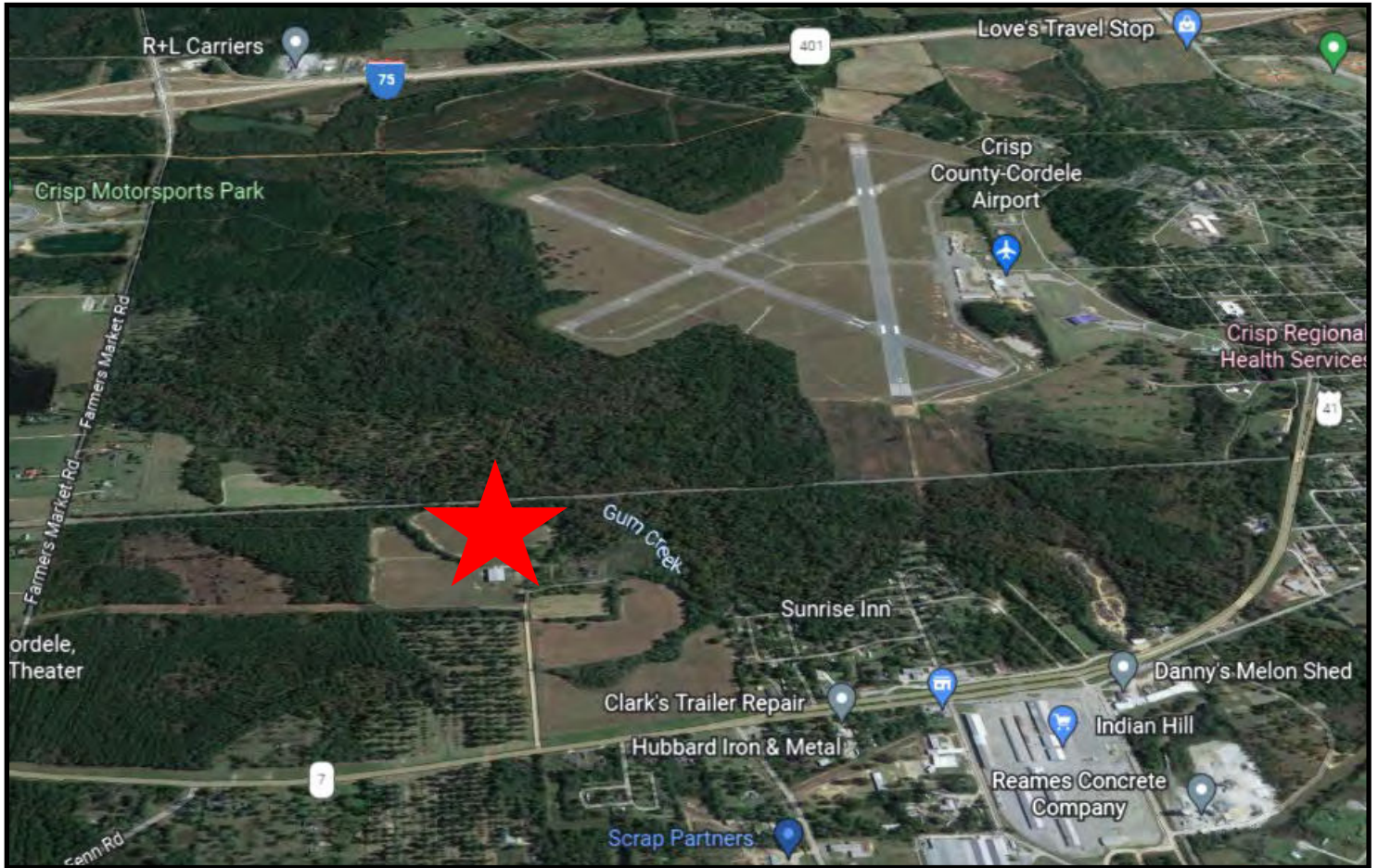
LEASE

INDUSTRIAL WAREHOUSE
167 STEEL ROAD
CORDELE, CRISP COUNTY, GEORGIA 31015



LEASE

INDUSTRIAL WAREHOUSE 167 STEEL ROAD CORDELE, CRISP COUNTY, GEORGIA 31015



HAL HARPER, CCIM
478.746.8171 Office • 478.951.3991 Cell
hharper@cbcworldwide.com
CBCMACON.COM



**COLDWELL BANKER
COMMERCIAL**
EBERHARDT & BARRY