

# SALE

## RETAIL / SHOWROOM / OFFICE

729 Highway 80, Allentown, Wilkinson County, GA 31017

**PRICE REDUCED**



**REDUCED SALES PRICE:**  
**~~\$59,000~~ \$50,000**

### PROPERTY OVERVIEW

- 930± SF Retail / Showroom / Office
  - Large walk-in cooler
  - Two large open rooms
  - Restroom
- Built in 2014
- .10± Acres
- Zoned Commercial
- Property Tax: \$504

### LOCATION OVERVIEW

- Subject property located on the corner of Highway 80 & Highway 112
- Great location for floral shop, convenience store, taxidermy, service related business, insurance office, contractor

**THOMAS RHODES**  
706.615.5233 Cell  
trhodes@cbcworldwide.com



**COLDWELL BANKER**  
**COMMERCIAL**  
EBERHARDT & BARRY

990 RIVERSIDE DRIVE • MACON, GA 31201 • 478.746.8171 • CBCMACON.COM

Revised 8/4/23

# SALE

## RETAIL / SHOWROOM / OFFICE

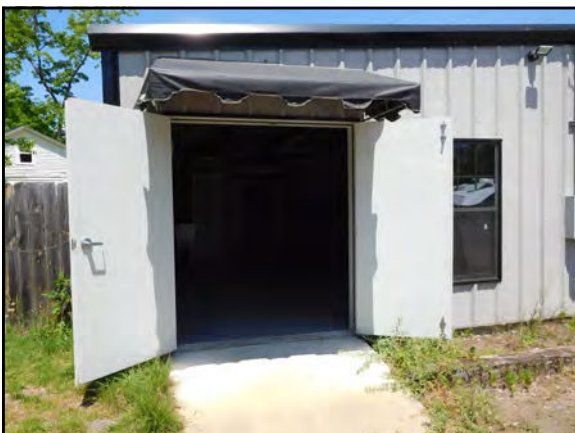
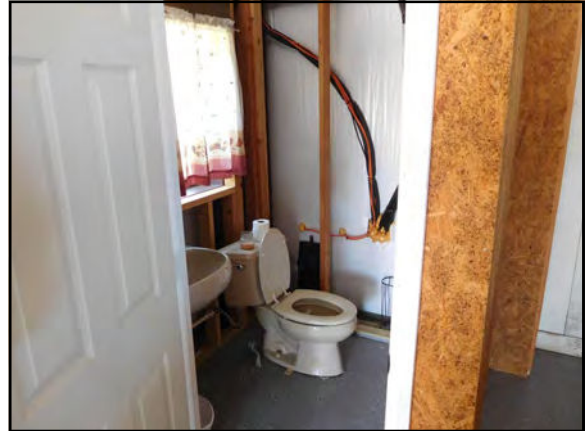
729 Highway 80, Allentown, Wilkinson County, GA 31017



# SALE

## RETAIL / SHOWROOM / OFFICE

729 Highway 80, Allentown, Wilkinson County, GA 31017



THOMAS RHODES  
706.615.5233 Cell  
trhodes@cbcworldwide.com



**COLDWELL BANKER  
COMMERCIAL**  
EBERHARDT & BARRY

990 RIVERSIDE DRIVE • MACON, GA 31201 • 478.746.8171 • CBCMACON.COM

# SALE

RETAIL / SHOWROOM / OFFICE

729 Highway 80, Allentown, Wilkinson County, GA 31017



THOMAS RHODES  
706.615.5233 Cell  
trhodes@cbcworldwide.com



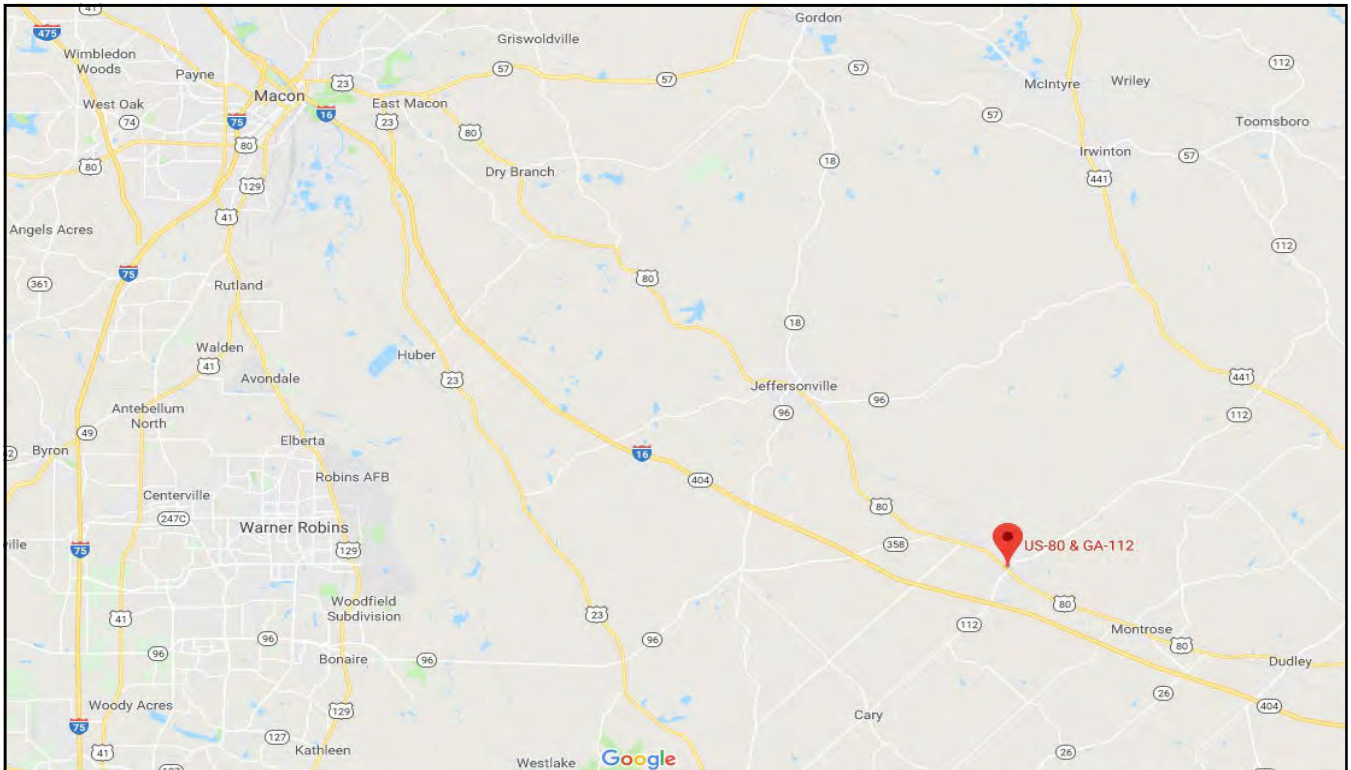
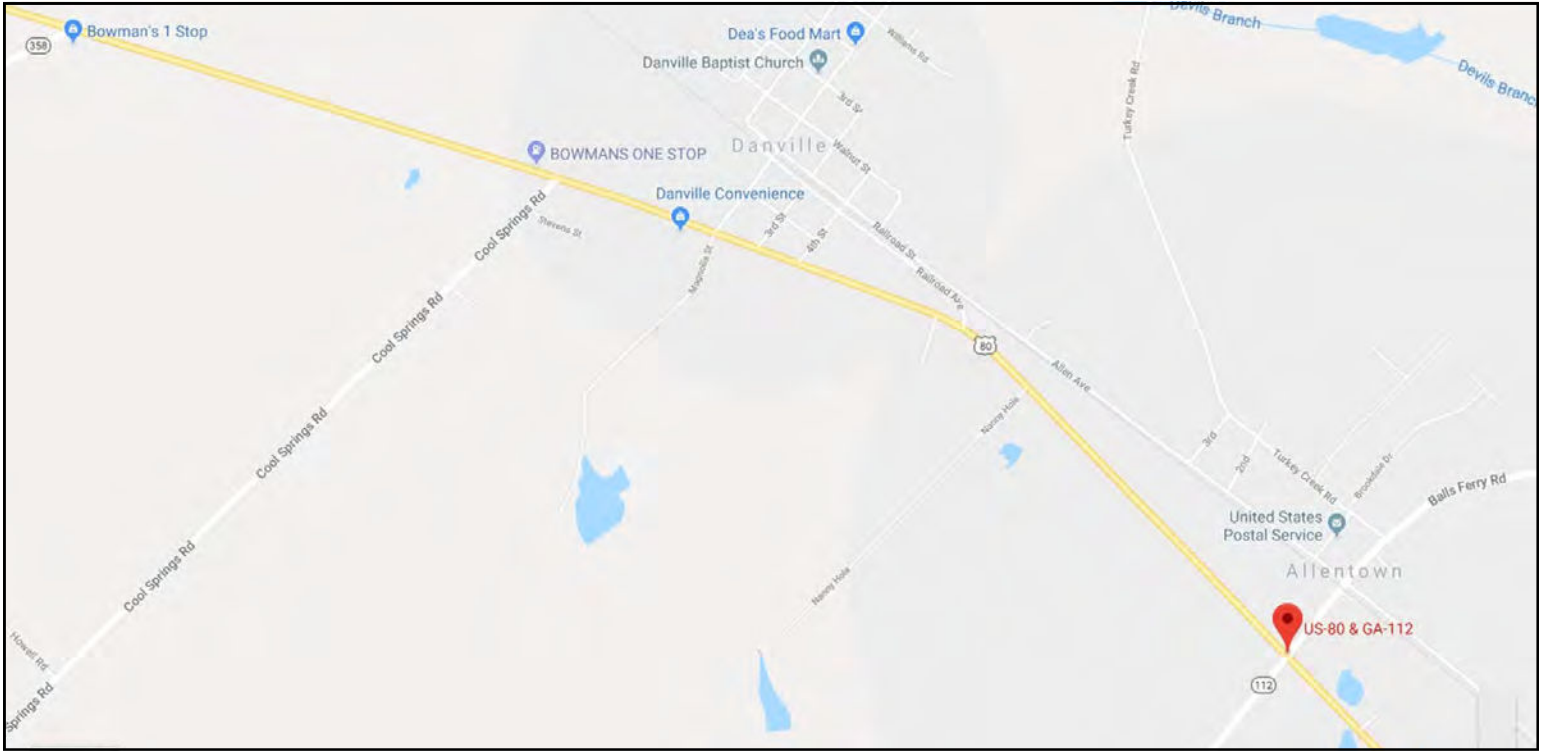
COLDWELL BANKER  
**COMMERCIAL**  
EBERHARDT & BARRY

990 RIVERSIDE DRIVE • MACON, GA 31201 • 478.746.8171 • CBCMACON.COM

# SALE

## RETAIL / SHOWROOM / OFFICE

729 Highway 80, Allentown, Wilkinson County, GA 31017



**THOMAS RHODES**  
706.615.5233 Cell  
trhodes@cbcworldwide.com



**COLDWELL BANKER  
COMMERCIAL**  
EBERHARDT & BARRY

990 RIVERSIDE DRIVE • MACON, GA 31201 • 478.746.8171 • CBCMACON.COM

### DEMOGRAPHICS - WILKINSON COUNTY

Wilkinson County, GA 6  
 Wilkinson County, GA (13319)  
 Geography: County

Prepared by Esri

#### KEY FACTS

8,717

Population



2.4

Average Household Size

43.0

Median Age

\$38,923

Median Household Income

#### EDUCATION

11%

No High School Diploma



53%

High School Graduate



25%

Some College



11%

Bachelor's/Grad/Prof Degree

#### BUSINESS



294

Total Businesses



3,743

Total Employees

#### EMPLOYMENT



White Collar

49%



Blue Collar

39%



Services

11%



5.0%  
Unemployment Rate

#### INCOME



\$38,923

Median Household Income



\$24,295

Per Capita Income



\$78,304

Median Net Worth

#### 2023 Households By Income (Esri)

The largest group: <\$15,000 (19.7%)

The smallest group: \$150,000 - \$199,999 (2.1%)

Indicator ▲	Value	Diff
<\$15,000	19.7%	+10.3%
\$15,000 - \$24,999	15.7%	+8.3%
\$25,000 - \$34,999	10.6%	+2.6%
\$35,000 - \$49,999	12.3%	+1.4%
\$50,000 - \$74,999	17.1%	0
\$75,000 - \$99,999	10.4%	-3.1%
\$100,000 - \$149,999	9.5%	-7.0%
\$150,000 - \$199,999	2.1%	-5.9%
\$200,000+	2.5%	-6.6%

Bars show deviation from 13 (Georgia)

Source: This infographic contains data provided by Esri, Esri-Data Axle. The vintage of the data is 2023, 2028.

©2023 Esri

Page 1 of 1

August 4, 2023

**THOMAS RHODES**  
 706.615.5233 Cell  
 trhodes@cbcworldwide.com



**COLDWELL BANKER  
 COMMERCIAL**  
 EBERHARDT & BARRY

990 RIVERSIDE DRIVE • MACON, GA 31201 • 478.746.8171 • CBCMACON.COM