

# LEASE

## LAKESIDE COMMONS CORPORATE CENTER

6055 Lakeside Commons Drive  
Macon, Bibb County, Georgia 31210



### AVAILABLE OFFICE SPACE

**1,896± RSF**



North Macon's Premier, Class A, four-story office building strategically located @ I-75 & Bass Road.

Lakeside Commons is one of Macon's first fitness office parks.

Beautiful lake views, 250 surface parking spaces and a walking trail around the lake.

The architecturally designed landscaping brings the peaceful outdoors right into your office.

Within walking distance to Publix, Lofts at Bass, Ambitions Health Club, Mellow Mushroom, Margarita's, Burger King, Chick-Fil-A, Homewood Suites, Holiday Inn Express & much more.

STEPHANIE FOLSOM, CCIM  
478.361.8259 Cell  
stephanie@cbcworldwide.com

990 Riverside Drive • Macon, GA 31201 • 478.746.8171 • CBCMACON.COM



**COLDWELL BANKER  
COMMERCIAL**  
EBERHARDT & BARRY

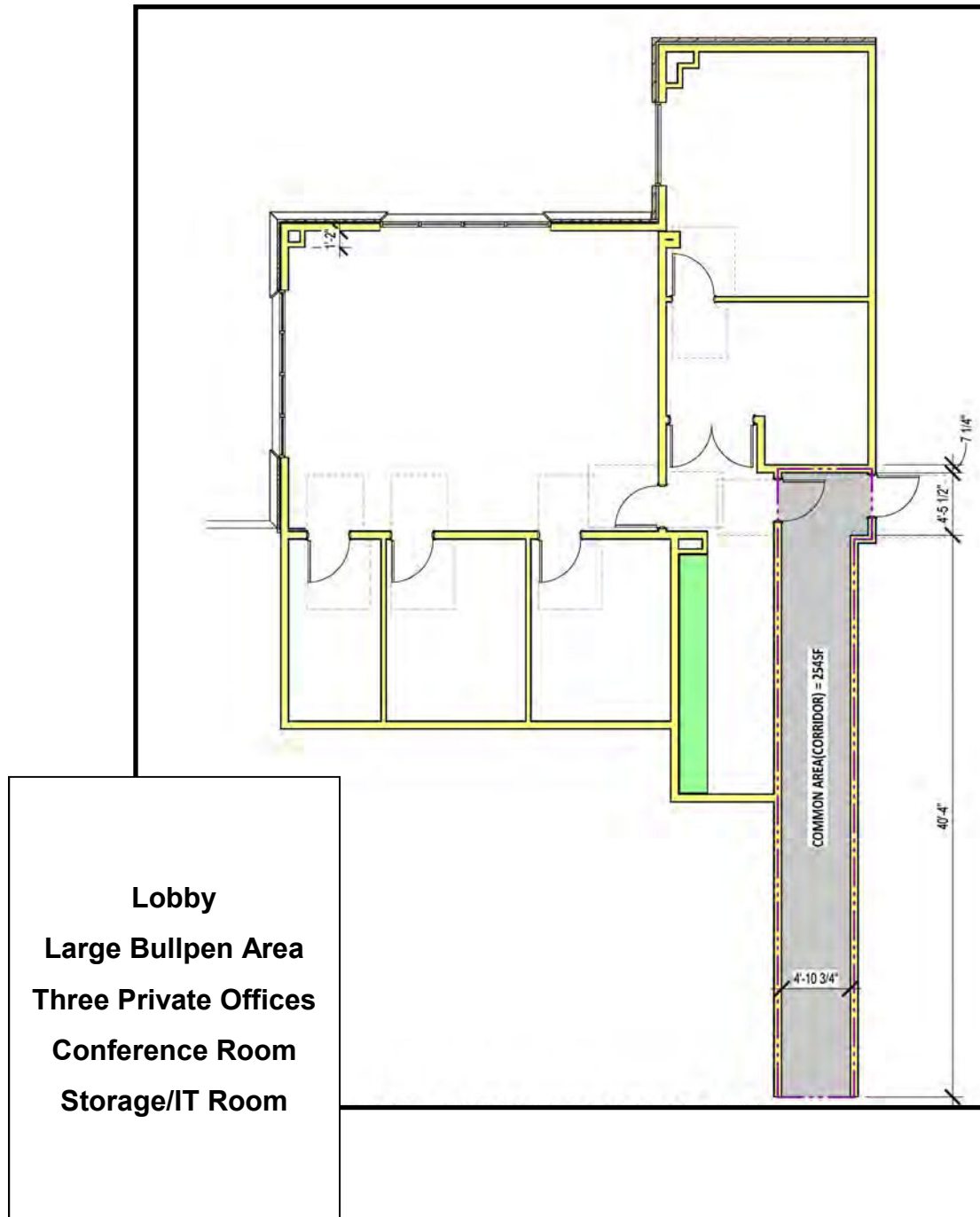
Revised 8/3/22

# LEASE

## LAKESIDE COMMONS CORPORATE CENTER

6055 Lakeside Commons Drive  
Macon, Bibb County, Georgia 31210

**SUITE 440 • 1,896± RSF**

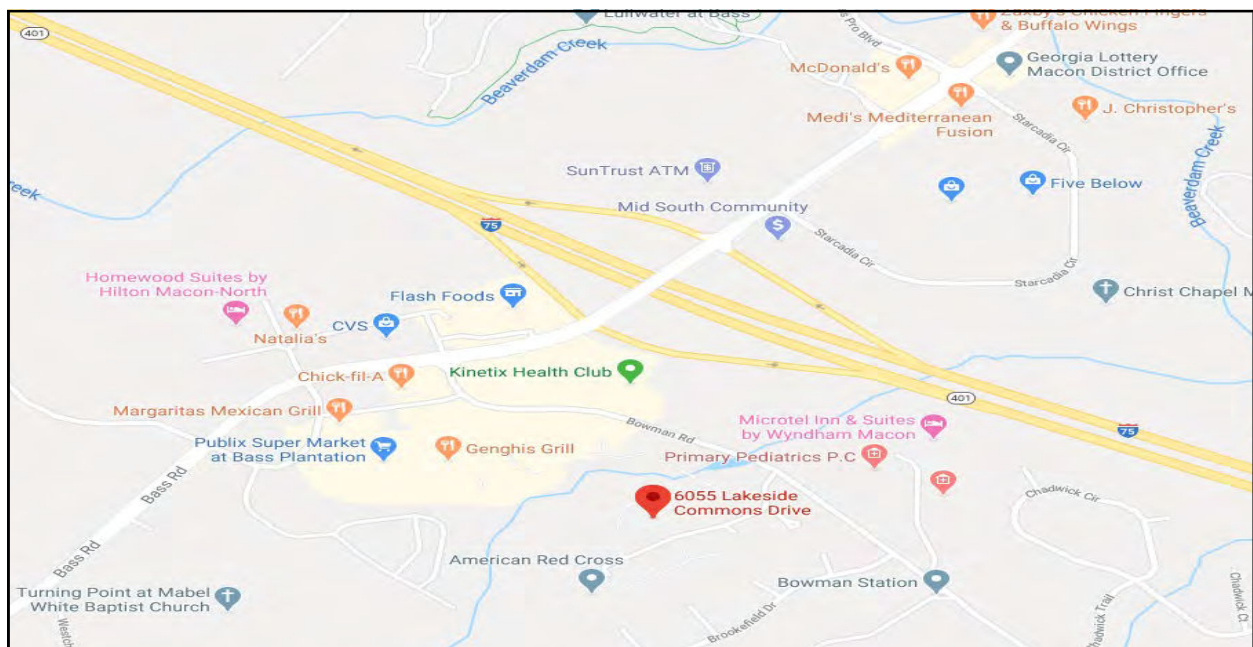




# LEASE

## LAKESIDE COMMONS CORPORATE CENTER

6055 Lakeside Commons Drive  
Macon, Bibb County, Georgia 31210



STEPHANIE FOLSOM, CCIM  
478.361.8259 Cell  
stephanie@cbcworldwide.com

990 Riverside Drive • Macon, GA 31201 • 478.746.8171 • CBCMACON.COM



**COLDWELL BANKER  
COMMERCIAL**  
EBERHARDT & BARRY



# LEASE

## LAKESIDE COMMONS CORPORATE CENTER

6055 Lakeside Commons Drive  
Macon, Bibb County, Georgia 31210

### Custom Template (Esri 2022)

Bibb County, GA 17  
Bibb County, GA (13021)  
Geography: County

Prepared by Esri

#### KEY FACTS

157,366

Population



2.4

Average  
Household Size

37.8

Median Age

\$48,982

Median Household  
Income

#### EDUCATION

12%

No High  
School  
Diploma



31%

High School  
Graduate



29%

Some College



29%

Bachelor's/Grad/Prof  
Degree

#### BUSINESS



6,634

Total Businesses



84,123

Total Employees

#### EMPLOYMENT



White Collar

66%



Blue Collar

19%



Services

15%

4.0%

Unemployment  
Rate

#### INCOME



\$48,982

Median Household  
Income



\$30,730

Per Capita Income



\$60,993

Median Net Worth

#### Households By Income

The largest group: <\$15,000 (15.3%)

The smallest group: \$200,000+ (5.1%)

Indicator ▲	Value	Diff	
<\$15,000	15.3%	+6.4%	
\$15,000 - \$24,999	9.5%	+1.8%	
\$25,000 - \$34,999	12.2%	+4.2%	
\$35,000 - \$49,999	13.7%	+2.2%	
\$50,000 - \$74,999	14.7%	-3.3%	
\$75,000 - \$99,999	11.7%	-1.6%	
\$100,000 - \$149,999	12.5%	-4.0%	
\$150,000 - \$199,999	5.3%	-2.2%	
\$200,000+	5.1%	-3.4%	

Bars show deviation from 13 (Georgia)

Source: This infographic contains data provided by Esri, Esri-Data Axle. The vintage of the data is 2022, 2027.

STEPHANIE FOLSOM, CCIM

478.361.8259 Cell

stephanie@cbcworldwide.com

990 Riverside Drive • Macon, GA 31201 • 478.746.8171 • CBCMACON.COM



**COLDWELL BANKER  
COMMERCIAL**  
EBERHARDT & BARRY