

# LEASE

WIMBISH MIDTOWN PLAZA SHOPPING CENTER  
2980 RIVERSIDE DRIVE  
MACON, BIBB COUNTY, GEORGIA 31210



**MONTHLY LEASE RATE:**  
**\$2,900.00**

## LOCATION OVERVIEW

- Located in North Macon at the busy signalized intersection of Riverside Drive and Wimbish Road
- 5 miles from Downtown Macon

## TENANT LIST

Mikata Japanese Steakhouse  
Fitness Xtreme  
Coast to Coast Medical Transportation  
Wimbish Beauty Salon  
Twin Cuts Barber Shop  
Saving Animals From Euthanasia, Inc.

## PROPERTY OVERVIEW

- 2,050± SF Storefront Retail
- Former Bass Cleaners
- Average Daily Traffic Count: 23,900 VPD
- Plentiful asphalt paved parking
- Signage available on façade of building
- Zoned C4
- Landlord pays CAM

**ARTHUR P. BARRY III**  
478.731.8000 Cell  
abarry@cbcworldwide.com

990 RIVERSIDE DRIVE • MACON, GA 31201 • 478.746.8171 • CBCMACON.COM



**COLDWELL BANKER  
COMMERCIAL**  
EBERHARDT & BARRY

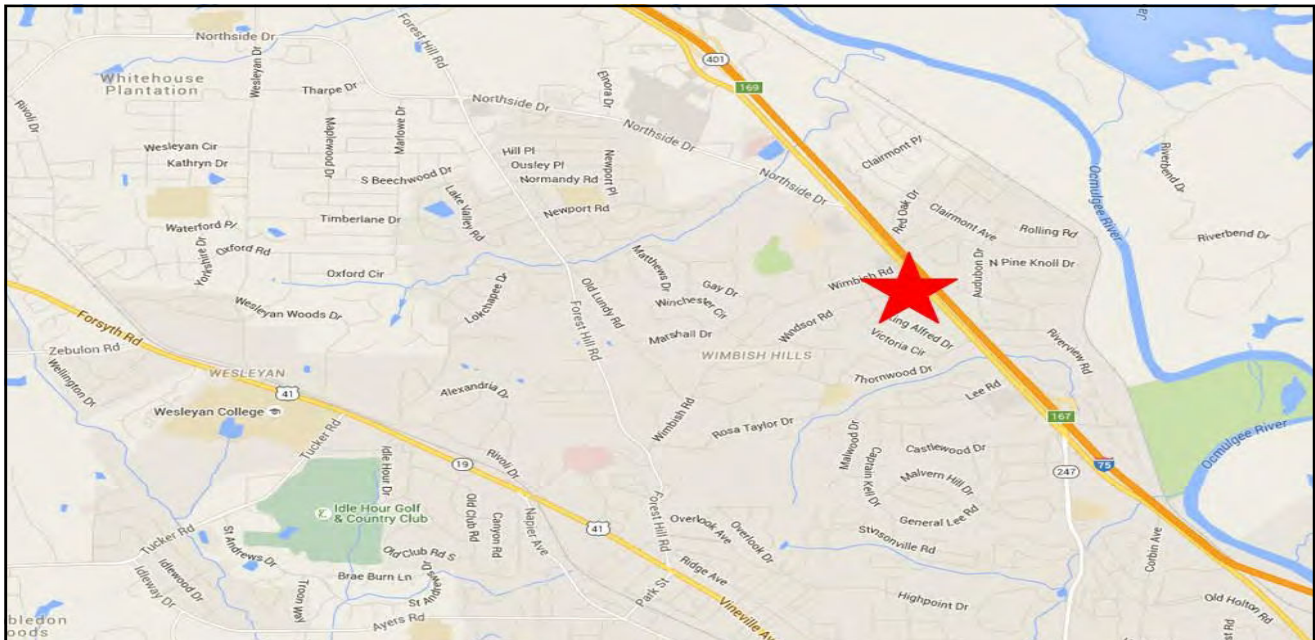
Revised 12/8/25

# LEASE

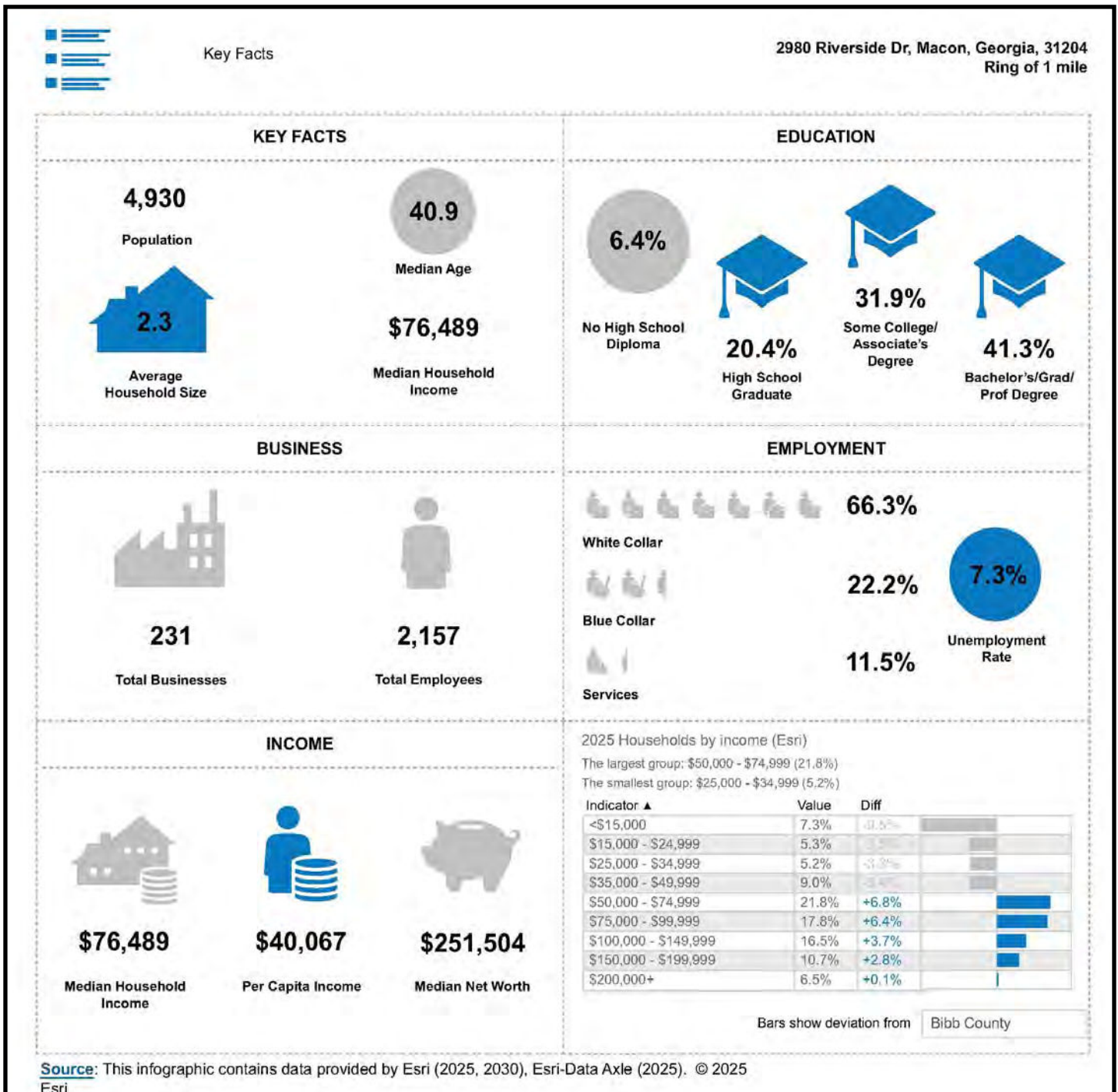
## WIMBISH MIDTOWN PLAZA SHOPPING CENTER

### 2980 RIVERSIDE DRIVE

### MACON, BIBB COUNTY, GEORGIA 31210



©2025 Coldwell Banker Real Estate LLC, dba Coldwell Banker Commercial Eberhardt & Barry. All rights reserved. Coldwell Banker Commercial® and the Coldwell Banker Commercial logo are registered service marks owned by Coldwell Banker Real Estate LLC. Coldwell Banker Real Estate LLC, dba Coldwell Banker Commercial Affiliates fully supports the principles of the Fair Housing Act and the Equal Opportunity Act. Each office is independently owned and operated. The information provided herein is deemed reliable, but it is not guaranteed to be accurate or complete, and it should not be relied upon as such. The information herein should be independently verified before any person enters into a transaction based upon it.





#### Key Facts

2980 Riverside Dr, Macon, Georgia, 31204  
Ring of 3 miles

#### KEY FACTS

31,154

Population



2.3

Average  
Household Size

39.1

Median Age

\$68,358

Median Household  
Income

#### EDUCATION

7.8%

No High School  
Diploma



22.3%

High School  
Graduate



28.4%

Some College/  
Associate's  
Degree



41.5%

Bachelor's/Grad/  
Prof Degree

#### BUSINESS



1,481

Total Businesses



14,010

Total Employees

#### EMPLOYMENT



65.8%

White Collar



17.9%

Blue Collar



16.4%

Services



4.8%

Unemployment  
Rate

#### INCOME



\$68,358

Median Household  
Income



\$42,034

Per Capita Income



\$127,746

Median Net Worth

#### 2025 Households by income (Esri)

The largest group: \$50,000 - \$74,999 (18.3%)

The smallest group: \$15,000 - \$24,999 (6.9%)

| Indicator ▲           | Value | Diff  |
|-----------------------|-------|-------|
| <\$15,000             | 12.1% | -4.2% |
| \$15,000 - \$24,999   | 6.9%  | -1.0% |
| \$25,000 - \$34,999   | 7.0%  | -1.5% |
| \$35,000 - \$49,999   | 10.2% | -1.1% |
| \$50,000 - \$74,999   | 18.3% | +3.3% |
| \$75,000 - \$99,999   | 14.0% | +2.6% |
| \$100,000 - \$149,999 | 13.7% | +0.9% |
| \$150,000 - \$199,999 | 9.5%  | +1.6% |
| \$200,000+            | 8.4%  | +2.0% |

Bars show deviation from Bibb County

Source: This infographic contains data provided by Esri (2025, 2030), Esri-Data Axle (2025). © 2025 Esri



## Key Facts

2980 Riverside Dr, Macon, Georgia, 31204  
Ring of 5 miles

### KEY FACTS

82,694

Population



2.2

Average  
Household Size

38.0

Median Age

\$52,077

Median Household  
Income

### EDUCATION

11.1%

No High School  
Diploma



28.9%

High School  
Graduate



25.4%

Some College/  
Associate's  
Degree



34.6%

Bachelor's/Grad/  
Prof Degree

### BUSINESS



4,697

Total Businesses



51,765

Total Employees

### EMPLOYMENT



64.1%

White Collar



16.4%

Blue Collar



19.5%

Services



5.7%

Unemployment  
Rate

### INCOME



\$52,077

Median Household  
Income



\$35,566

Per Capita Income



\$45,128

Median Net Worth

### 2025 Households by income (Esri)

The largest group: <\$15,000 (20.0%)

The smallest group: \$150,000 - \$199,999 (7.0%)

| Indicator ▲           | Value | Diff  |  |
|-----------------------|-------|-------|--|
| <\$15,000             | 20.0% | +3.2% |  |
| \$15,000 - \$24,999   | 8.6%  | -1.2% |  |
| \$25,000 - \$34,999   | 8.6%  | +0.1% |  |
| \$35,000 - \$49,999   | 11.3% | -1.1% |  |
| \$50,000 - \$74,999   | 15.0% | 0     |  |
| \$75,000 - \$99,999   | 11.4% | 0     |  |
| \$100,000 - \$149,999 | 10.4% | -2.4% |  |
| \$150,000 - \$199,999 | 7.0%  | -4.1% |  |
| \$200,000+            | 7.7%  | +1.3% |  |

Bars show deviation from Bibb County

Source: This infographic contains data provided by Esri (2025, 2030), Esri-Data Axle (2025). © 2025 Esri