

LEASE

WAREHOUSE / OFFICE

2711 Waterville Road—Macon, Bibb County, Georgia 31206

RATE REDUCED



MONTHLY LEASE RATE:

~~-\$2,000.00~~ **\$1,800.00**

LOCATION OVERVIEW

- Located in downtown Macon's Industrial District off Eisenhower Parkway (US 80)
- Convenient to Interstate 75 and Interstate 16
- Zoned M1, Light Industrial
- Neighbors: Cherokee Brick, Ryder Truck Rental, Wheeler Machine & Parts, Fleet Pride, Macon Battery

PROPERTY OVERVIEW

- 8,000± SF Warehouse / Office
- Warehouse floorplan:
 - Office
 - Showroom
 - Three (3) personnel entry doors
- Truck Loading:
 - Covered dock
 - One (1) 10' X 10' dock high door
 - One (1) 10' X 10' overhead drive-in door
 - One (1) 8' X 10' overhead drive-in door
- 1.09± Acre corner lot; fenced
- Asphalt paved parking
- Built in 1969

DEIDRA STEWART
478.508.2652 Cell
deidra@cbcworldwide.com



**COLDWELL BANKER
COMMERCIAL**

EBERHARDT & BARRY

Revised 1/12/24

990 RIVERSIDE DRIVE • MACON, GA 31201 • 478.746.8171 • CBCMACON.COM

LEASE

WAREHOUSE / OFFICE

2711 Waterville Road—Macon, Bibb County, Georgia 31206

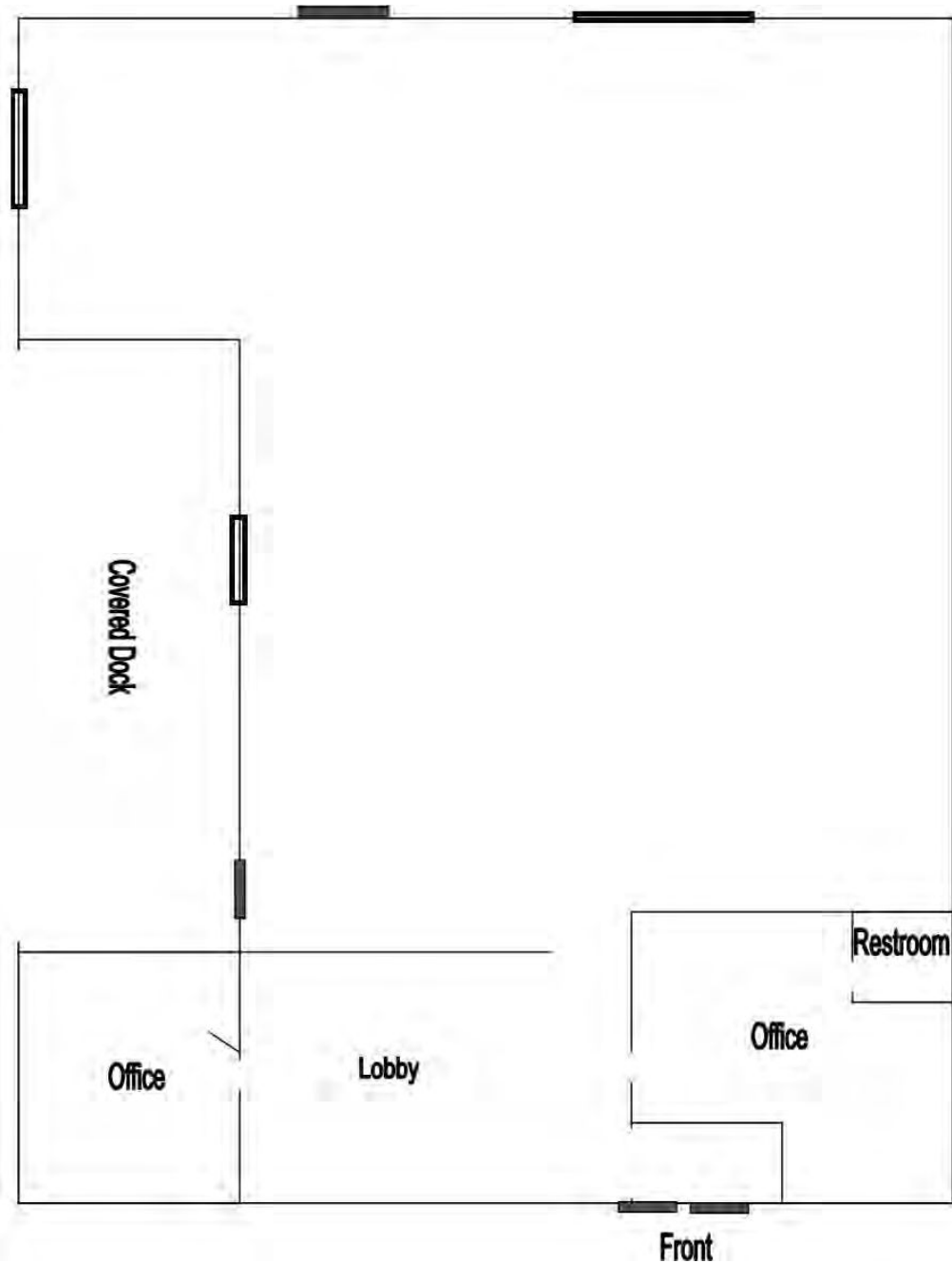


LEASE

WAREHOUSE / OFFICE

2711 Waterville Road—Macon, Bibb County, Georgia 31206

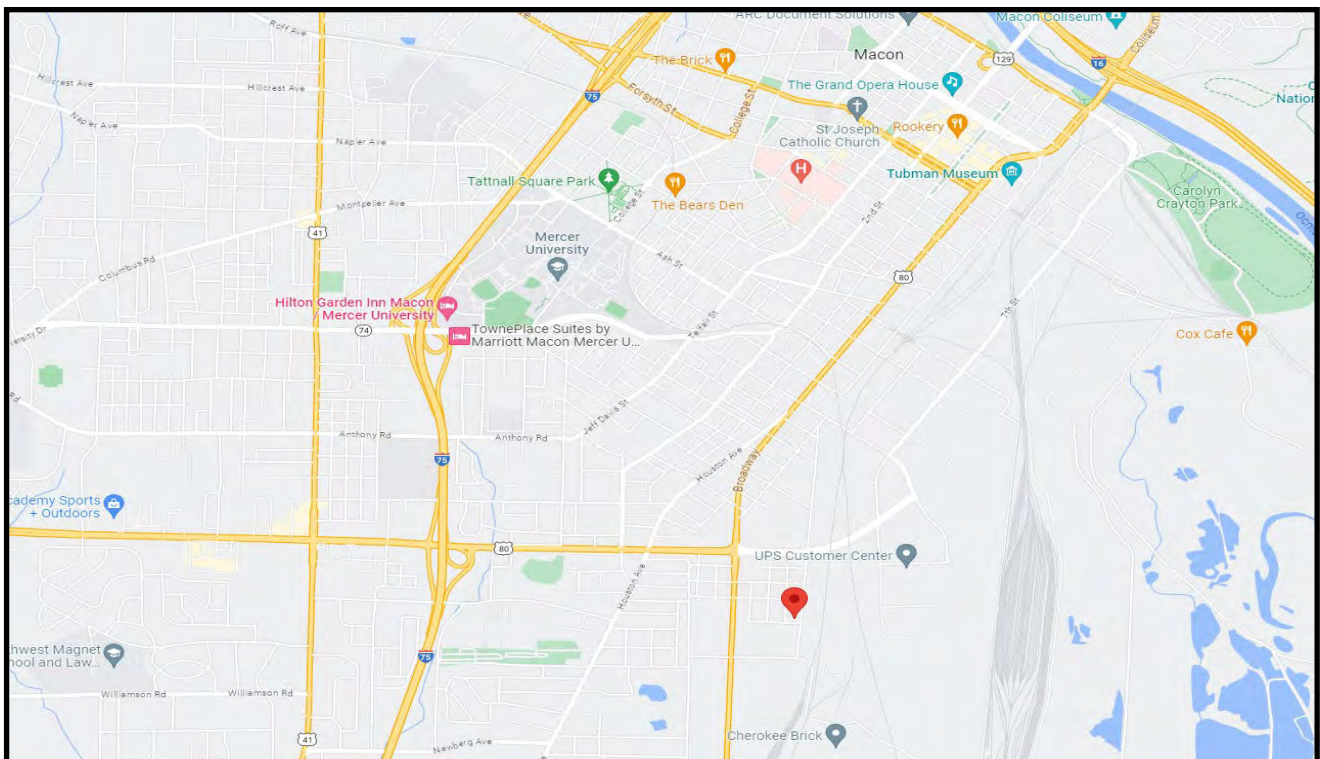
FLOOR PLAN



LEASE

WAREHOUSE / OFFICE

2711 Waterville Road—Macon, Bibb County, Georgia 31206



4

DEIDRA STEWART
478.508.2652 Cell
deidra@cbcworldwide.com



COLDWELL BANKER
COMMERCIAL
EBERHARDT & BARRY

990 RIVERSIDE DRIVE • MACON, GA 31201 • 478.746.8171 • CBCMACON.COM