

LEASE

PROFESSIONAL OFFICE SPACE
1501 BASS ROAD, MACON, GEORGIA 31210



LEASE RATE:
\$17.50/PSF, FULL SERVICE

LOCATION OVERVIEW

- Located in North Macon in front of Publix on the corner of Bass Road and Bass Plantation Drive
- 12,900± Average VPD (2022 GDOT)
- 1/2 mile from Interstate 75
- Walking distance to restaurants, banks and shopping

PROPERTY HIGHLIGHTS

- 11,000± SF Professional Office Suite
- Floor plan (page 2) consists of:
 - Reception / Waiting room
 - 34 Private offices
 - Four (4) office cubicles
 - Two (2) conference rooms
 - Large work room
 - Breakroom
 - Two (2) Storage closets
 - Two (2) Restrooms
- Adequate parking
- All public utilities serve the site
- Zoned PDE

STEPHANIE FOLSOM, CCIM
478.361.8259 Cell
stephanie@cbcworldwide.com



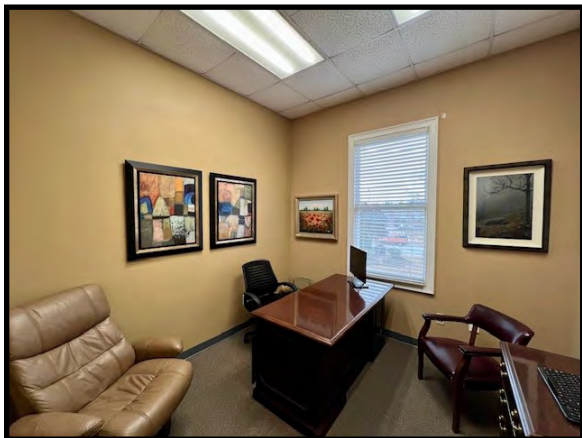
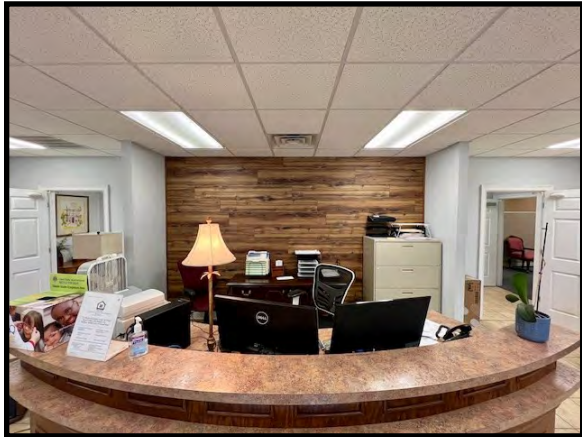
COLDWELL BANKER
COMMERCIAL
EBERHARDT & BARRY

990 RIVERSIDE DRIVE • MACON, GA 31201 • 478.746.8171 • CBCMACON.COM

Created 10/23/23

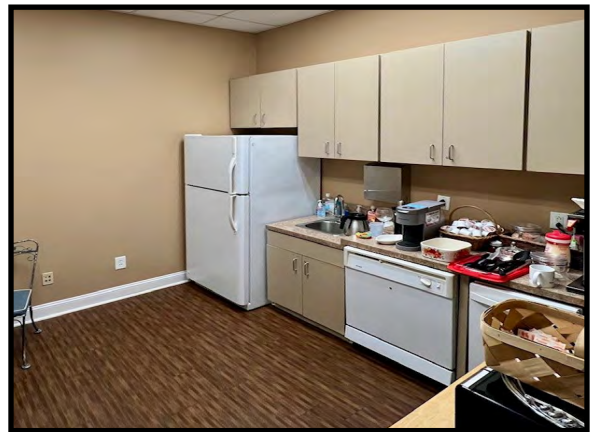
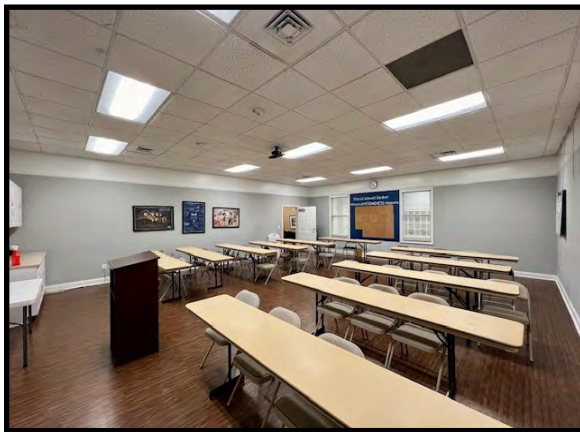
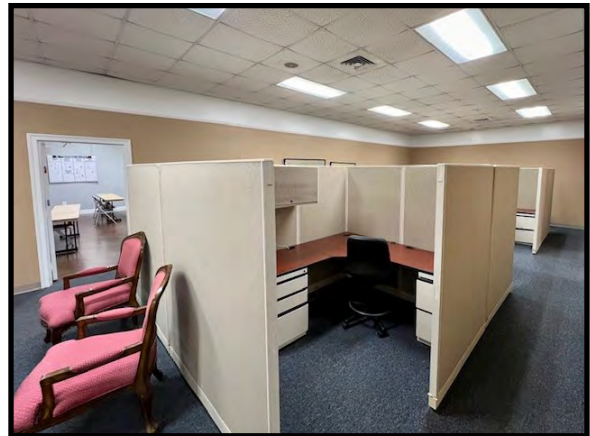
LEASE

PROFESSIONAL OFFICE SPACE 1501 BASS ROAD, MACON, GEORGIA 31210



LEASE

PROFESSIONAL OFFICE SPACE 1501 BASS ROAD, MACON, GEORGIA 31210



LEASE

PROFESSIONAL OFFICE SPACE
1501 BASS ROAD, MACON, GEORGIA 31210

FLOOR PLAN



STEPHANIE FOLSOM, CCIM
478.361.8259 Cell
stephanie@cbcworldwide.com

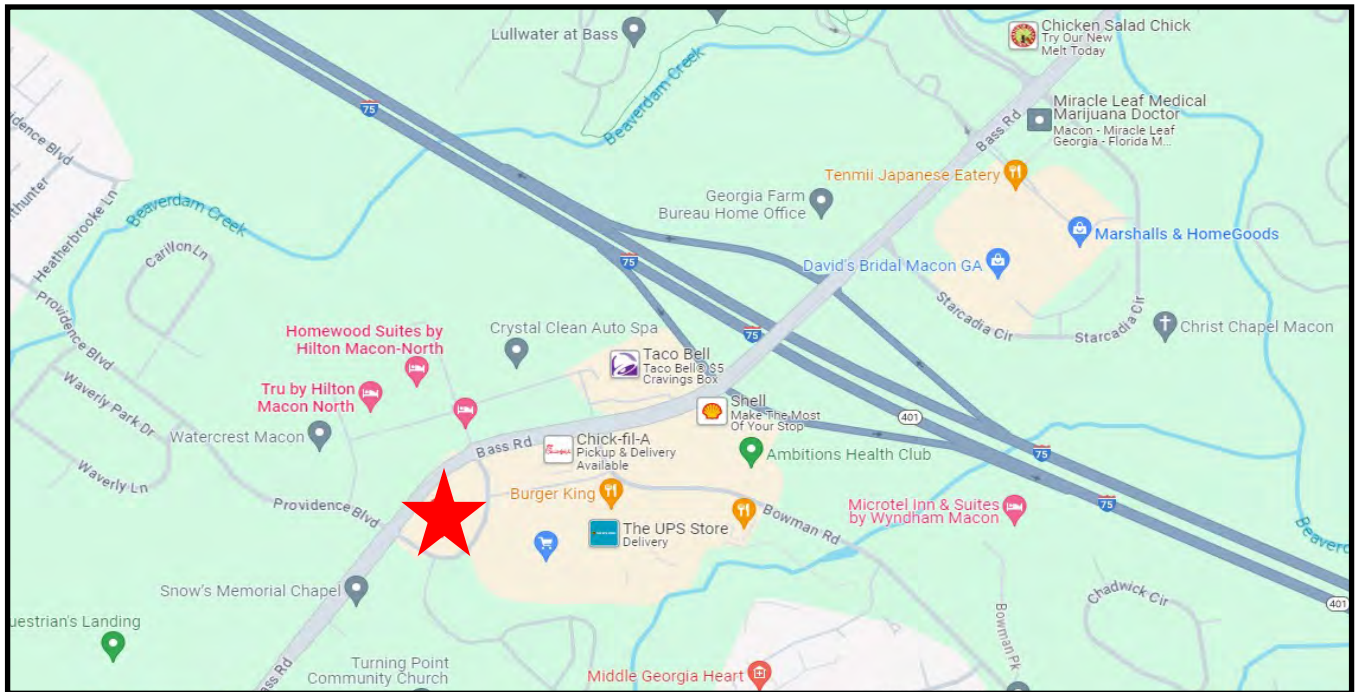


COLDWELL BANKER
COMMERCIAL
EBERHARDT & BARRY

990 RIVERSIDE DRIVE • MACON, GA 31201 • 478.746.8171 • CBCMACON.COM

LEASE

PROFESSIONAL OFFICE SPACE 1501 BASS ROAD, MACON, GEORGIA 31210



STEPHANIE FOLSOM, CCIM
478.361.8259 Cell
stephanie@cbcworldwide.com



**COLDWELL BANKER
COMMERCIAL**
EBERHARDT & BARRY

990 RIVERSIDE DRIVE • MACON, GA 31201 • 478.746.8171 • CBCMACON.COM

LEASE

PROFESSIONAL OFFICE SPACE 1501 BASS ROAD, MACON, GEORGIA 31210

DEMOGRAPHICS - BIBB COUNTY

