

# FOR LEASE

NEW RETAIL DEVELOPMENT - 1.4 ACRES  
PERRY PKWY - HOUSTON COUNTY GA

**\$34 PSF BASE**  
**(CAM - TBD)**



## **PATRICK BARRY**

ASSOCIATE BROKER

pbarry@cbcgeorgia.com

Cell: (478) 718-1806

Office: (478) 746-8171

990 Riverside Drive

Macon GA 31201



**COLDWELL BANKER  
COMMERCIAL**  
EBERHARDT & BARRY

The property information herein is derived from various sources that may include, but not be limited to, county records and may include approximations. Although the information is believed to be accurate, it is not warranted and you should not rely upon it without personal verification. ©2024 Coldwell Banker. All Rights Reserved. Coldwell Banker Commercial® and the Coldwell Banker Commercial logo are trademarks of Coldwell Banker Real Estate LLC. The Coldwell Banker® System is comprised of company owned offices which are owned by a subsidiary of Anywhere Advisors LLC and franchised offices which are independently owned and operated. The Coldwell Banker System fully supports the principles of the Equal Opportunity Act. 24GVKB-CBC\_3/24

# SALE

PERRY PKWY / HOUSTON LAKE RD  
PERRY GA

## OFFERING SUMMARY

Lot Size: 1.4 acres of New Retail Development

---

Available: Min. suite size 1,450 SF

---

Lease Rate: \$34 PSF - (CAM is TBD)

---

Traffic Count: ~16,000 VPD - Perry Pkwy  
~ 30,000 VPD - Houston Lake Rd

---

Zoning: C2

---

Utilities: All public utilities service the site and seller  
will provide access points on each side.

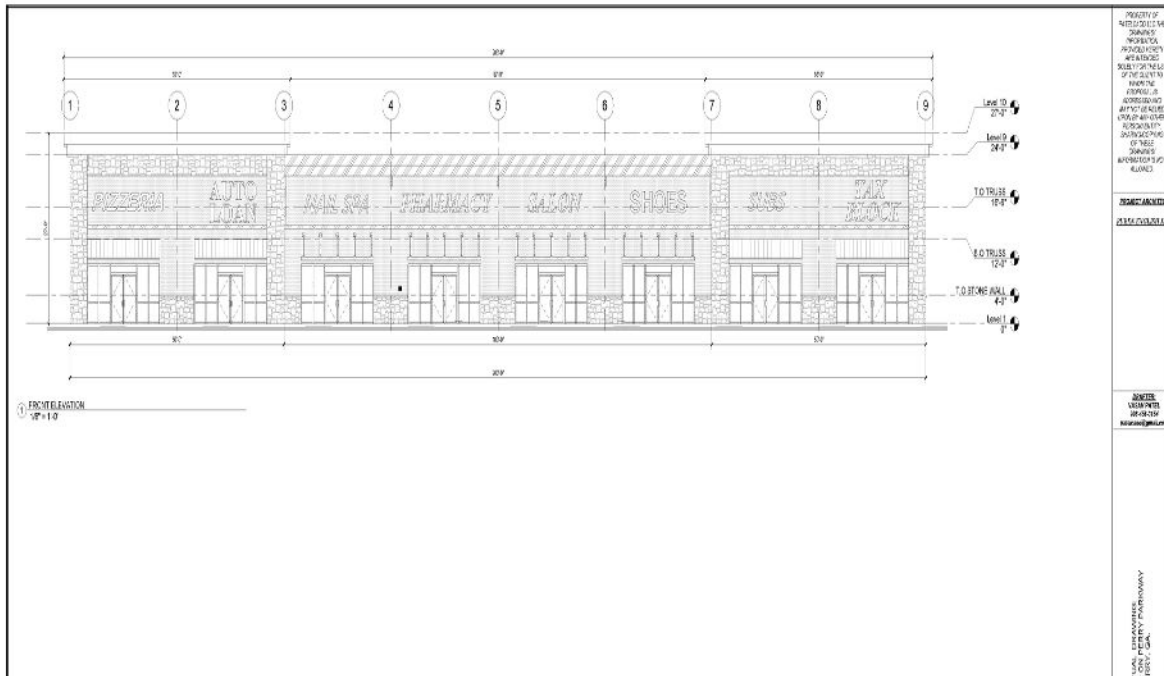
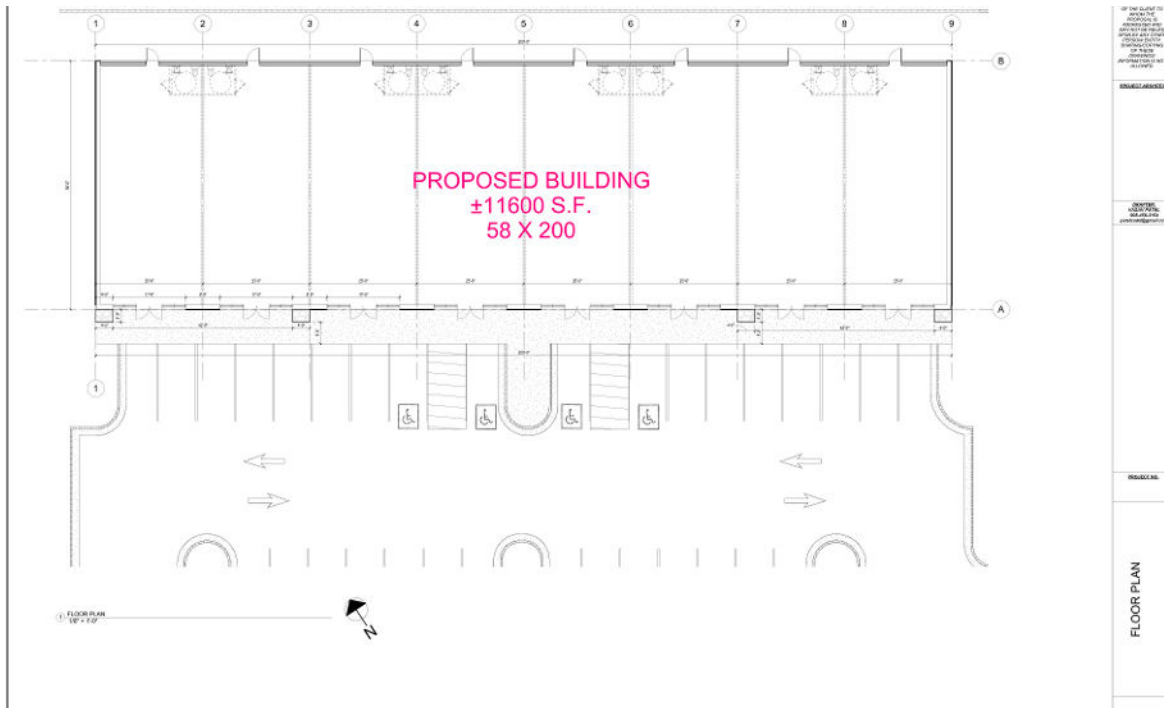
---

**PATRICK BARRY**  
ASSOCIATE BROKER  
pbarry@cbcgeorgia.com  
Cell: (478) 718-1806



# SALE

PERRY PKWY / HOUSTON LAKE RD  
PERRY, GA



**PATRICK BARRY**  
ASSOCIATE BROKER  
pbarry@cbcgeorgia.com  
Cell: (478) 718-1806



**COLDWELL BANKER  
COMMERCIAL**  
EBERHARDT & BARRY

# SALE

PERRY PKWY / HOUSTON LAKE RD  
PERRY, GA

## OFFERING SUMMARY

### PROPERTY OVERVIEW:

- 1.4 acres

- Directly across from The Shops at Perry Crossing - Over 1.5M Visits Annually

-Excellent Full Access and Cross Access to Houston Lake Road

- Approximately 16,000 vehicles per day and growing

Tyson Foods, FedEx, Tractor Supply, QuikTrip, Yancey Brothers, YKK, and Amazon.

- 35,581 residents within 10 min drive time and growing at 17% over next 5 years

-New residential development directly behind property

**PATRICK BARRY**  
ASSOCIATE BROKER  
pbarry@cbcgeorgia.com  
Cell: (478) 718-1806



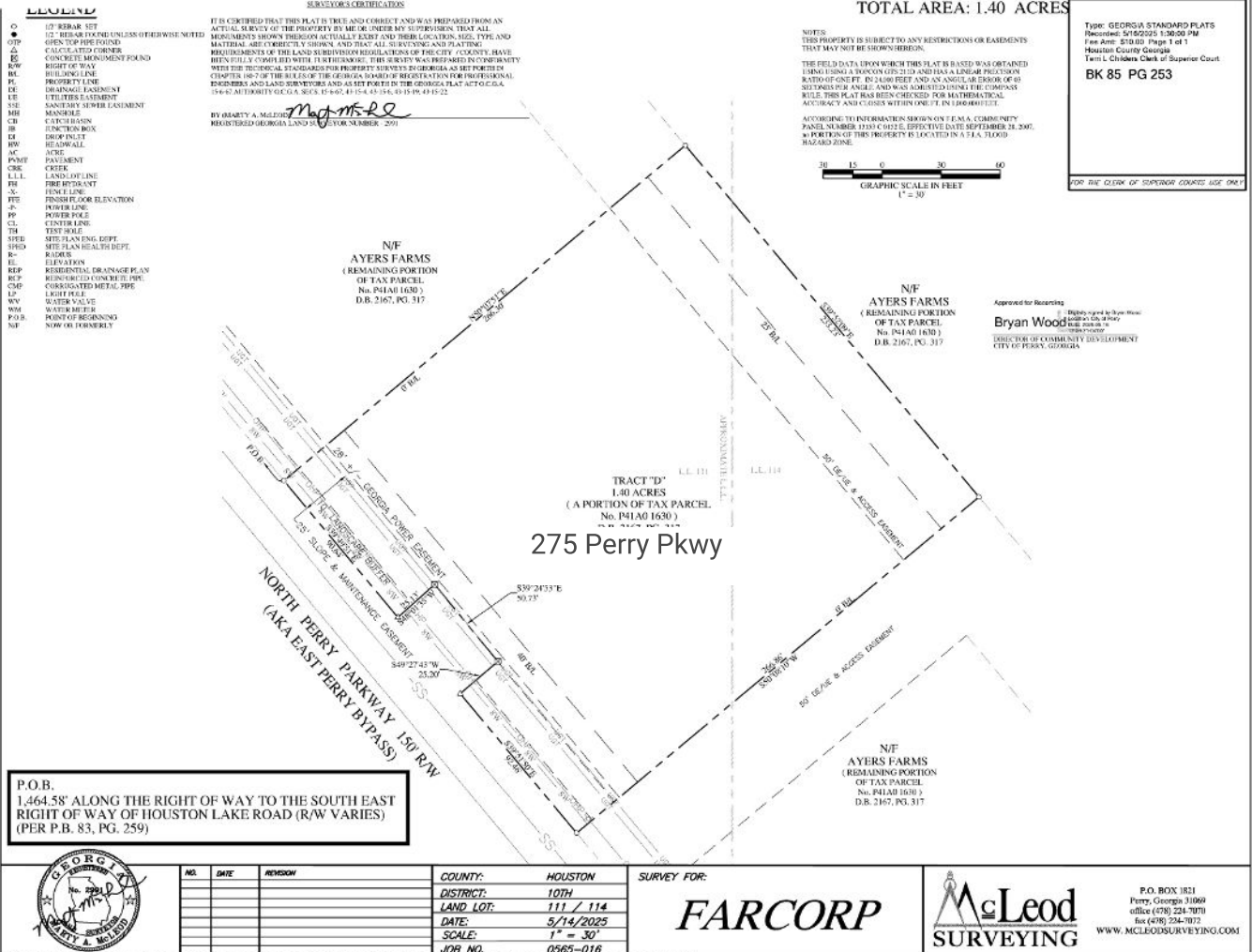


# SALE

## PERRY PKWY / HOUSTON LAKE RD PERRY, GA

### PLAT

Book 85 Page 253 Page 1 of 1

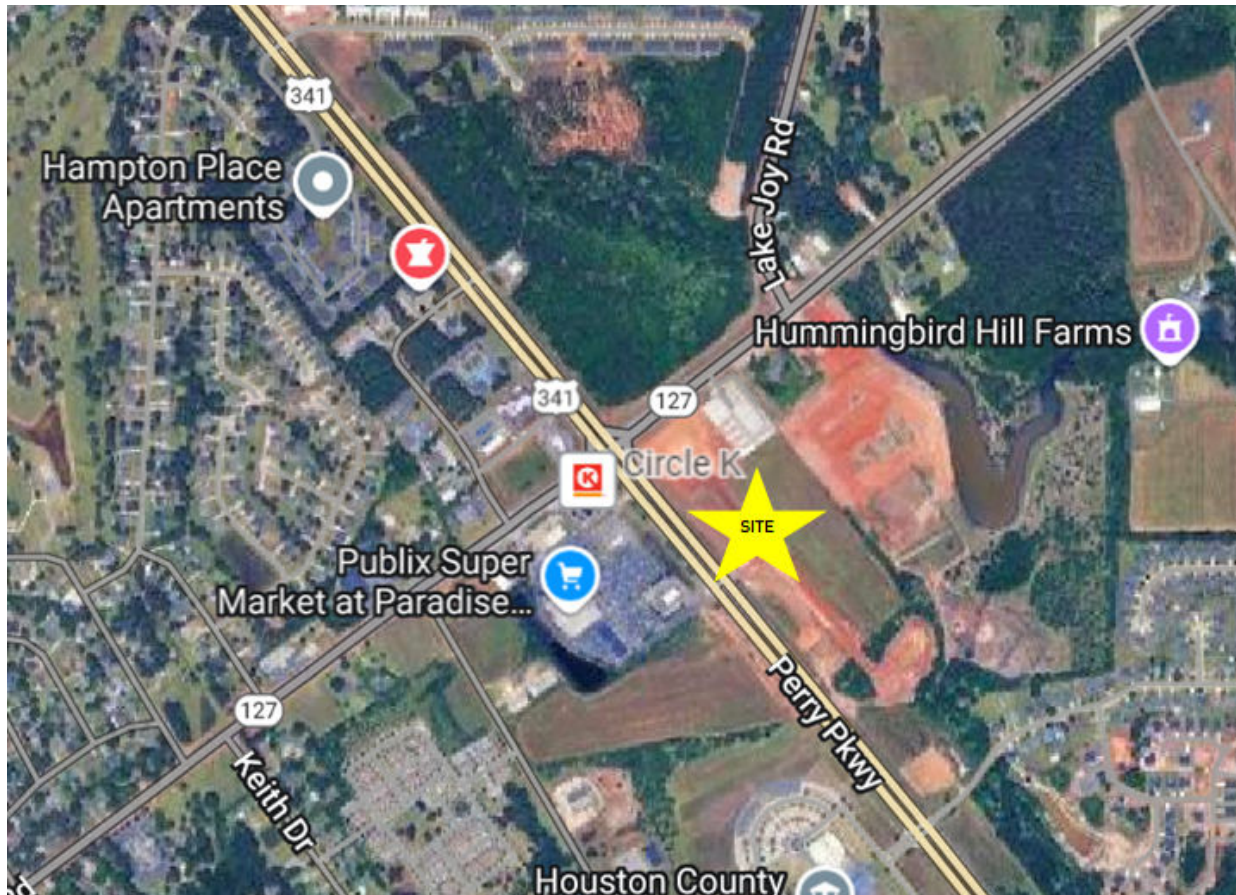


**PATRICK BARRY**  
ASSOCIATE BROKER  
pbarry@cbcgeorgia.com  
Cell: (478) 718-1806



# SALE

PERRY PKWY / HOUSTON LAKE RD  
PERRY, GA



**PATRICK BARRY**  
ASSOCIATE BROKER  
pbarry@cbcgeorgia.com  
Cell: (478) 718-1806



**COLDWELL BANKER  
COMMERCIAL**  
EBERHARDT & BARRY

# SALE

PERRY PKWY / HOUSTON LAKE RD  
PERRY, GA

## 5 MILE RADIUS

### KEY FACTS

37,868

Population



Average  
Household Size

37.7

Median Age

\$84,032

Median Household  
Income

### EDUCATION

5%

No High  
School  
Diploma



25%

High School  
Graduate



34%

Some College



36%

Bachelor's/Grad/Prof  
Degree

### BUSINESS



816

Total Businesses



15,687

Total Employees

### EMPLOYMENT



66%

White Collar



21%

Blue Collar



13%

Services

3.9%

Unemployment  
Rate

### INCOME



\$84,032

Median Household  
Income



\$39,865

Per Capita Income



\$280,774

Median Net Worth

### 2024 Households By Income (Esri)

The largest group: \$100,000 - \$149,999 (19.7%)

The smallest group: <\$15,000 (6.6%)

Indicator ▲	Value	Diff	
<\$15,000	6.6%	+0.5%	
\$15,000 - \$24,999	6.9%	+0.7%	
\$25,000 - \$34,999	7.6%	-1.8%	
\$35,000 - \$49,999	8.2%	-2.2%	
\$50,000 - \$74,999	14.1%	-1.4%	
\$75,000 - \$99,999	15.4%	+1.2%	
\$100,000 - \$149,999	19.7%	-0.4%	
\$150,000 - \$199,999	12.0%	+2.4%	

Bars show deviation from

Houston County ▾