

LEASE

MEDICAL OFFICE BUILDING
2525 SECOND STREET
MACON, BIBB COUNTY, GEORGIA 31206



BASE LEASE RATE:
\$14.00 - \$18.00/PSF, NNN

LOCATION OVERVIEW

- Located at the signalized intersection of Second Street and Eisenhower Parkway/US 80
- 1½± miles from Atrium Health Navicent Hospital
- 3± miles from Piedmont Macon Hospital
- 1/2± mile from Interstate 75
- Served by Macon Transit Authority
- Convenient to shopping and eateries
- Zoned C2, General Commercial District

PROPERTY OVERVIEW

15,760± SF Medical Office Building

Available Suites:

- Suite 2: 2,960± SF Medical Office
\$18.00/PSF, NNN (\$2.35/PSF NNN)
- Suite 3: 1,163± SF Office (Unfinished Space)
\$14.00/PSF, NNN (\$2.35/PSF NNN)
- 1.27± Acre corner site
- 210'± Frontage on Second Street and 337'± on Eisenhower Parkway (US 80)
- Built in 2003
- 55± Paved parking spaces; expandable
- Fire protection system
- 3 Phase/4 Wire with multiple meters

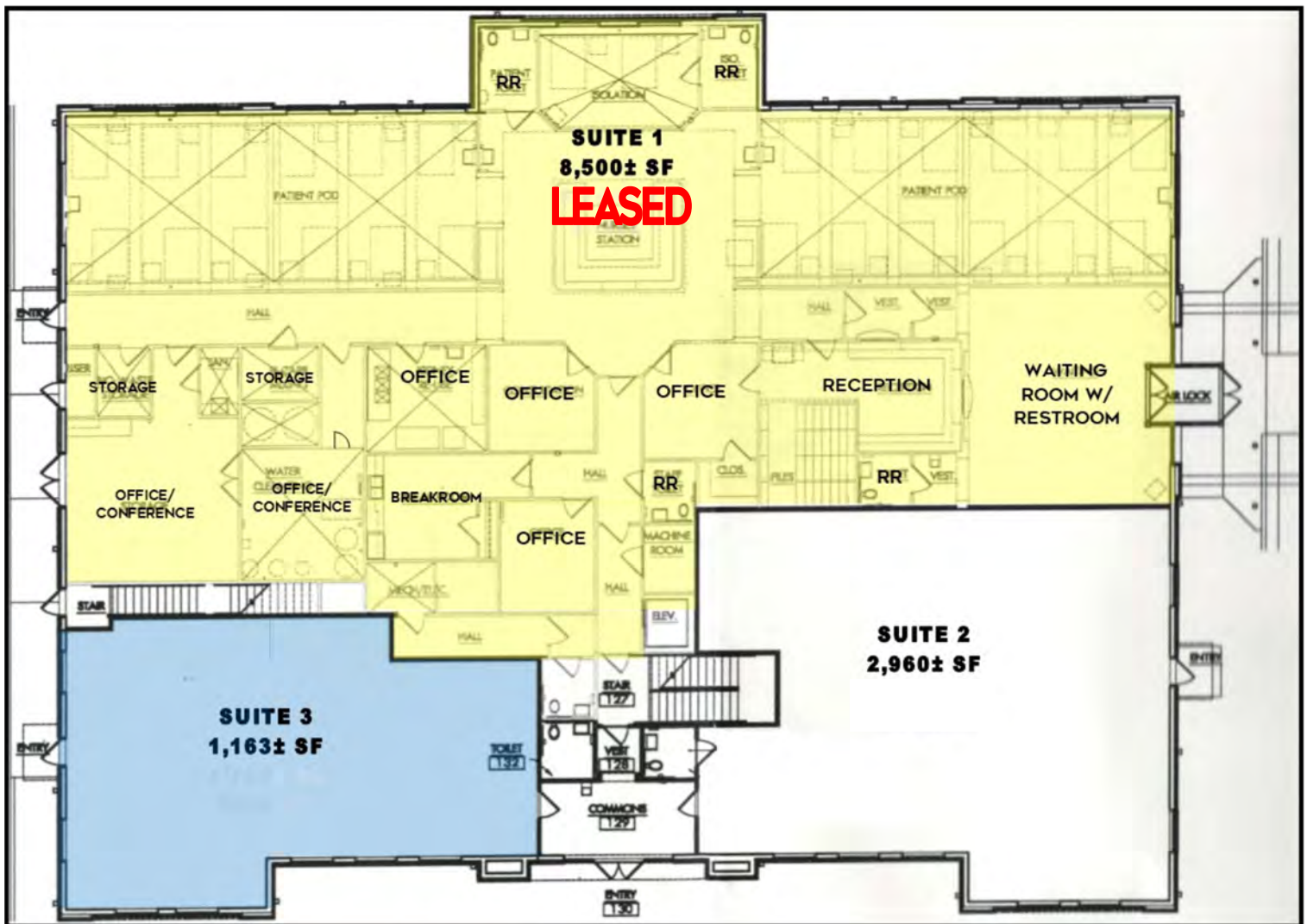
MIKI FOLSOM, CCIM
478.361.3036 Cell
mfolson@cbcgeorgia.com

990 RIVERSIDE DRIVE • MACON, GA 31201 • 478.746.8171 • CBCMACON.COM



COLDWELL BANKER
COMMERCIAL
EBERHARDT & BARRY
Created 6/25/25

FLOOR PLAN - SUITES 2 & 3



LEASE

MEDICAL OFFICE BUILDING
2525 SECOND STREET
MACON, BIBB COUNTY, GEORGIA 31206



MIKI FOLSOM, CCIM
478.361.3036 Cell
mfolsom@cbcgeorgia.com

3



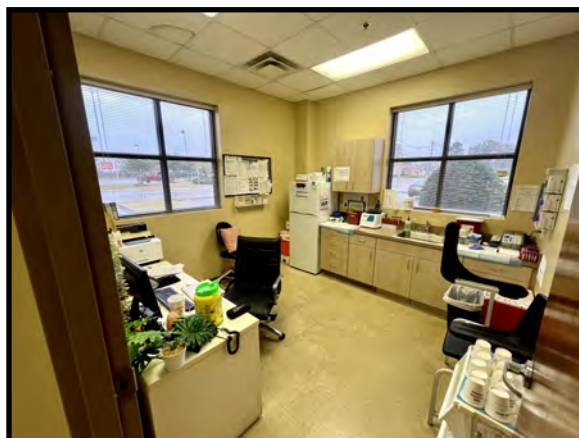
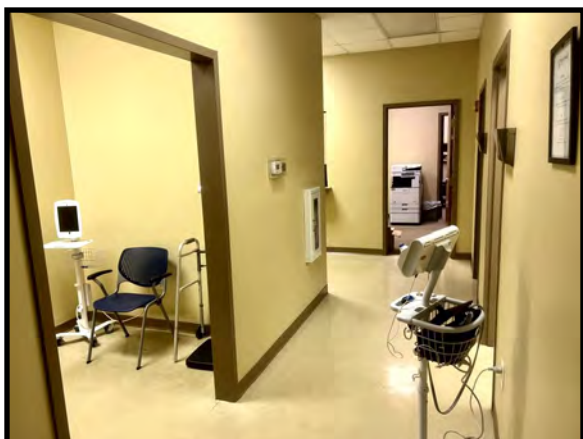
COLDWELL BANKER
COMMERCIAL
EBERHARDT & BARRY

990 RIVERSIDE DRIVE • MACON, GA 31201 • 478.746.8171 • CBCMACON.COM

LEASE

MEDICAL OFFICE BUILDING
2525 SECOND STREET
MACON, BIBB COUNTY, GEORGIA 31206

PHOTOS - SUITE 2



MIKI FOLSOM, CCIM
478.361.3036 Cell
mfolsom@cbcgeorgia.com

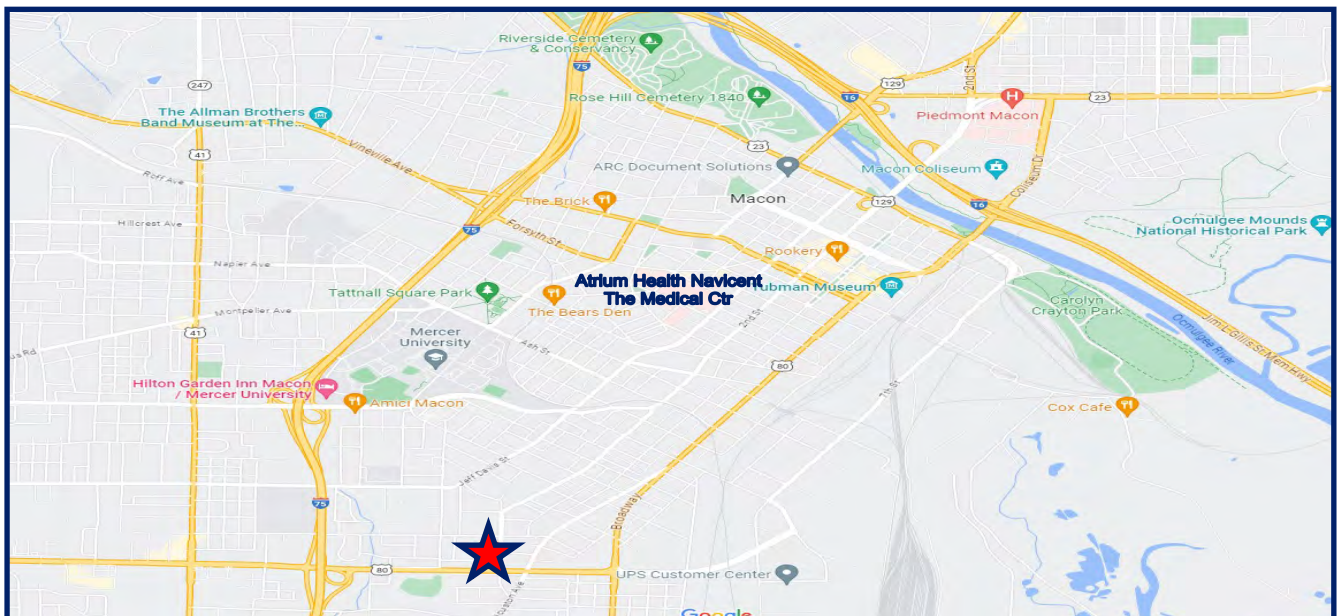
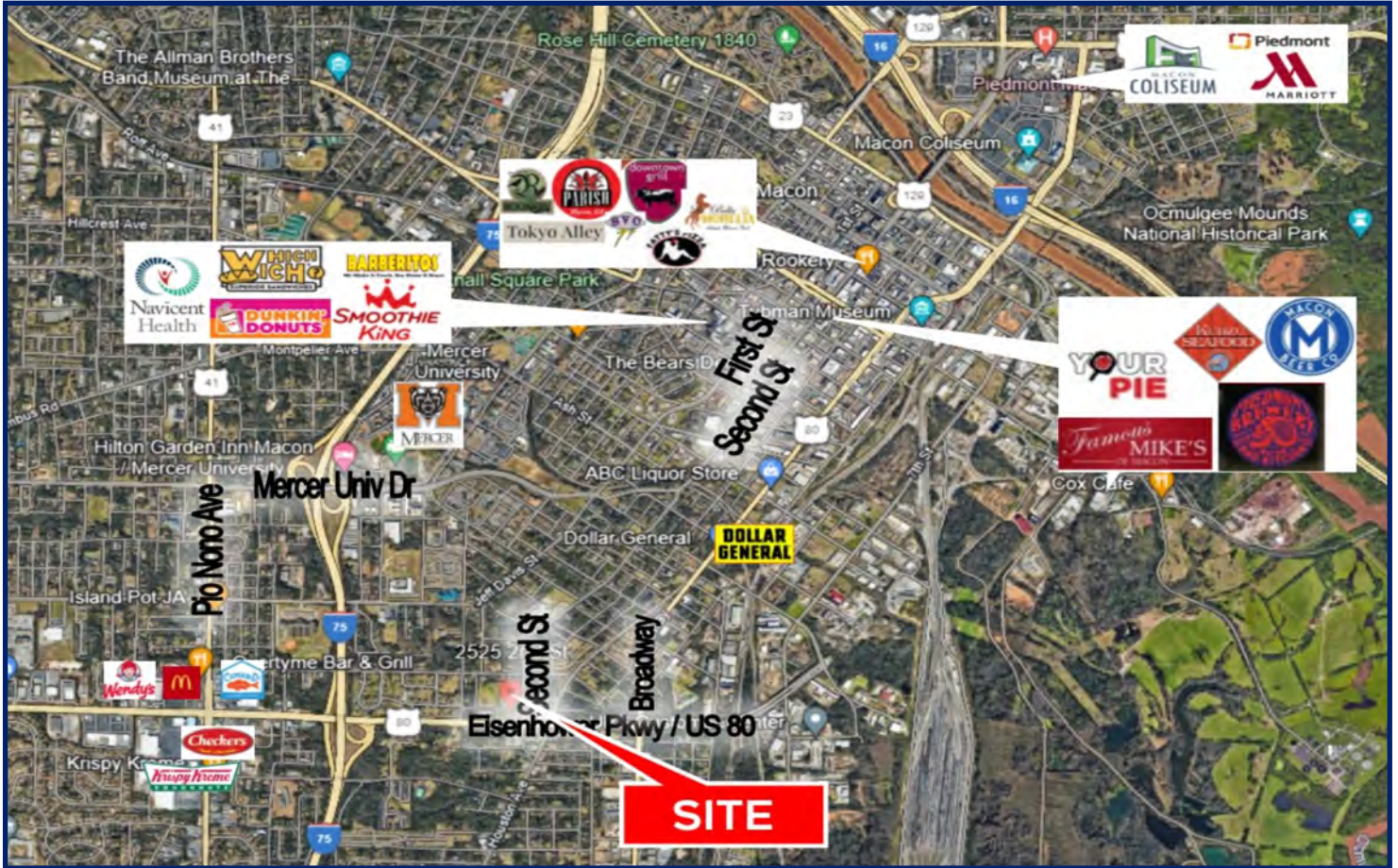


**COLDWELL BANKER
COMMERCIAL**
EBERHARDT & BARRY

990 RIVERSIDE DRIVE • MACON, GA 31201 • 478.746.8171 • CBCMACON.COM

LEASE

MEDICAL OFFICE BUILDING
2525 SECOND STREET
MACON, BIBB COUNTY, GEORGIA 31206



MIKI FOLSOM, CCIM
478.361.3036 Cell
mfolson@cbcgeorgia.com

5



COLDWELL BANKER
COMMERCIAL
EBERHARDT & BARRY

990 RIVERSIDE DRIVE • MACON, GA 31201 • 478.746.8171 • CBCMACON.COM