

PRICE REDUCED

"READY TO BUILD" SITE - THRIVING COMMERCIAL CORRIDOR



2259, 2273 HEATH ROAD
MACON, BIBB COUNTY, GEORGIA 31206

ARTHUR P. BARRY III, SIOR
ASSOCIATE BROKER / PARTNER
478.731.8000 CELL
ABARRY@CBCGEORGIA.COM
CBCMACON.COM
REVISED 7/30/25

REDUCED SALES PRICE: \$395,000



COLDWELL BANKER
COMMERCIAL

EBERHARDT & BARRY

990 RIVERSIDE DRIVE
MACON, GA 31201
478.746.8171 OFFICE



PROPERTY OVERVIEW

- Expansive 1.32 Acre Site
- Ideal for a variety of commercial uses - Retail, office / warehouse / showroom, a church or service businesses
- 247.5± Feet of prime road frontage
- Easy access and excellent visibility
- Cleared and graded - ready for immediate development
- All utilities available to the site

LOCATION OVERVIEW

- Outstanding visibility near the intersection of Heath Road / Tucker Road & Thomaston Road
- 22,500 Vehicles Per Day (Heath Road @ Thomaston Road) - high traffic counts ensure maximum exposure
- Surrounded by National Retailers - Publix, Taco Bell, Popeyes, O'Reilly's Auto Parts, Dollar General and more
- Convenient access - 1/2 mile from Interstate 475
- Close to recreation - only 2 Miles from Lake Tobesofkee (1,750 acre lake, two beautiful campgrounds and beaches)





TOBESOFKEE CROSSING - PUBLIX - ADJACENT PROPERTY



MAVIS TIRE - PUBLIX OUTPARCEL



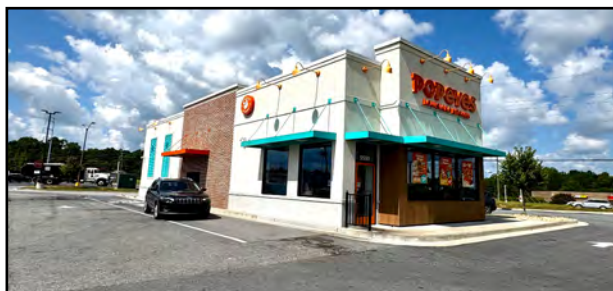
FOAMWORKS AUTO SPA



TACO BELL - PUBLIX OUTPARCEL



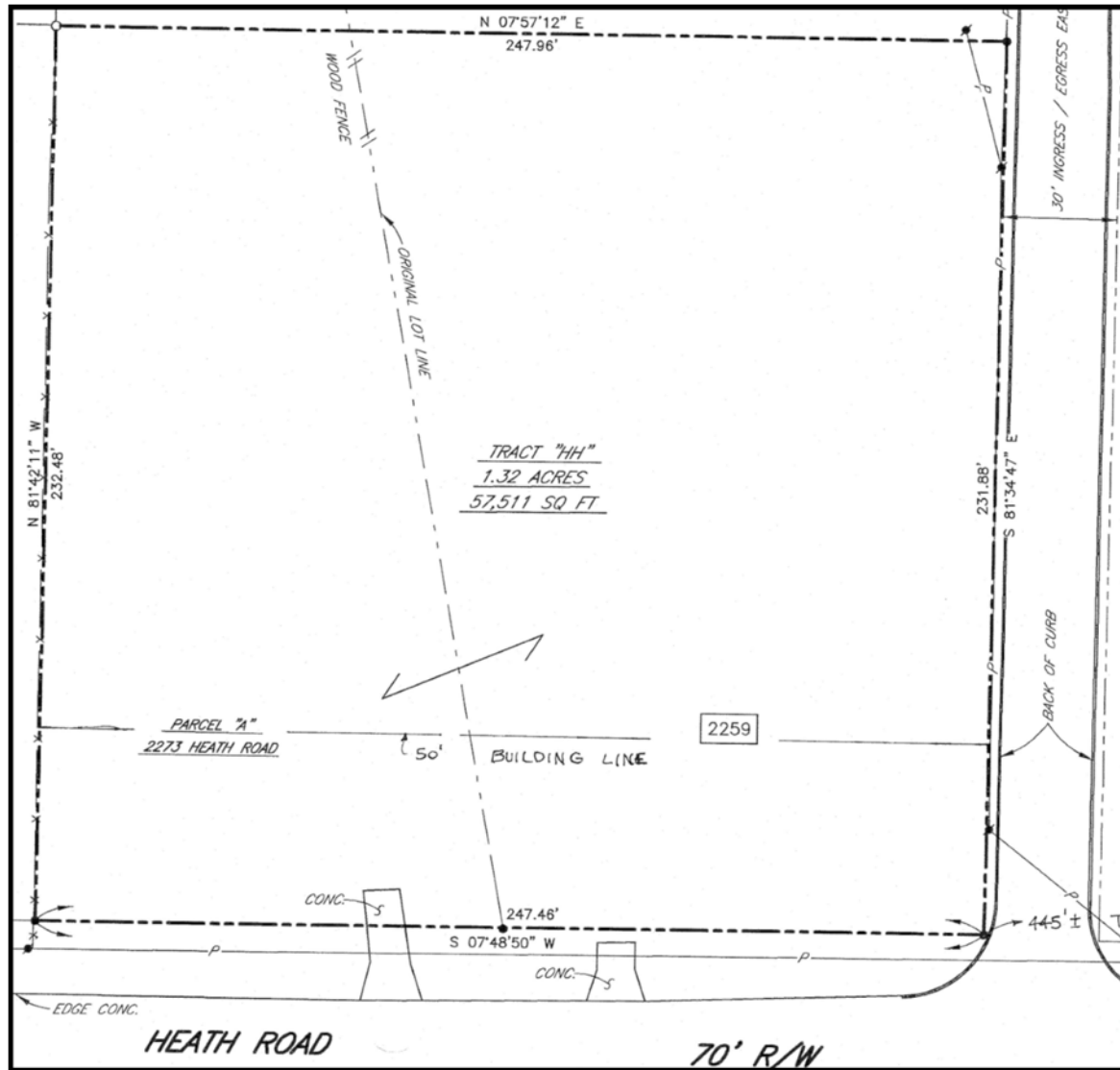
CIRCLE K - SUBWAY



POPEYES



RED OWL COFFEE



LOCATION MAP / DEMOGRAPHICS

**2259,2273 HEATH ROAD
MACON, BIBB COUNTY, GEORGIA 31206**



	1 MILE	3 MILE	5 MILE
2024 POPULATION	1,434	22,198	74,545
DAYTIME POPULATION	1,671	23,513	68,643
MEDIAN HOUSEHOLD INCOME	\$87,404	\$66,993	\$60,090

©2025 Coldwell Banker. All Rights Reserved. Coldwell Banker Commercial® and the Coldwell Banker Commercial logo are trademarks of Coldwell Banker Real Estate LLC. The Coldwell Banker® System is comprised of company owned offices which are owned by a subsidiary of Anywhere Advisors LLC and franchised offices which are independently owned and operated. The Coldwell Banker System fully supports the principles of the Equal Opportunity Act. The property information herein is derived from various sources that may include, but not be limited to, county records and may include approximations. Although the information is believed to be accurate, it is not warranted and you should not rely upon it without personal verification.