

SALE

COMMERCIAL BUILDING



**COLDWELL BANKER
COMMERCIAL**
EBERHARDT & BARRY

1100 BALL ST

PERRY, GA

SALES PRICE: \$2,950,000



CLAY MOORE

SALES ASSOCIATE

cmoore@cbcgeorgia.com

Cell: (478) 508-8852

Office: (478) 746-8171

990 Riverside Drive

Macon GA 31201

PATRICK BARRY

ASSOCIATE BROKER

pbarry@cbcgeorgia.com

Cell: (478) 718-1806

Office: (478) 746-8171

990 Riverside Drive

Macon GA 31201

The property information herein is derived from various sources that may include, but not be limited to, county records and may include approximations. Although the information is believed to be accurate, it is not warranted and you should not rely upon it without personal verification. ©2024 Coldwell Banker. All Rights Reserved. Coldwell Banker Commercial® and the Coldwell Banker Commercial logo are trademarks of Coldwell Banker Real Estate LLC. The Coldwell Banker® System is comprised of company owned offices which are owned by a subsidiary of Anywhere Advisors LLC and franchised offices which are independently owned and operated. The Coldwell Banker System fully supports the principles of the Equal Opportunity Act. 24GVKB_CBC_3/24

OFFERING SUMMARY

Available SF:	14,859 ± SF Total
Lot Size:	2.32± Acres
Year Built:	2008
Ceiling Height / Interior Measurements:	16' 2" Clear ; 35' x 40' base spacing ; 103' x 108' interior space
Zoning:	C-3
Roll-up Door:	1 - 8' Roll Up
Utilities:	All public utilities service site. 3 Phase Power. Men & Women 3-fixture bathroom with wash room in between
Parking:	67 paved & striped spaces
Location:	Signalized Intersection ; signage available ; Drive-Thru

CLAY MOORE
SALES ASSOCIATE
cmoore@cbcgeorgia.com
Cell: (478) 508-8852

PATRICK BARRY
ASSOCIATE BROKER
pbarry@cbcgeorgia.com
Cell: (478) 718-1806



**COLDWELL BANKER
COMMERCIAL**
EBERHARDT & BARRY

SALE

1100 BALL ST
PERRY, GA



CLAY MOORE
SALES ASSOCIATE
cmoore@cbcgeorgia.com
Cell: (478) 508-8852

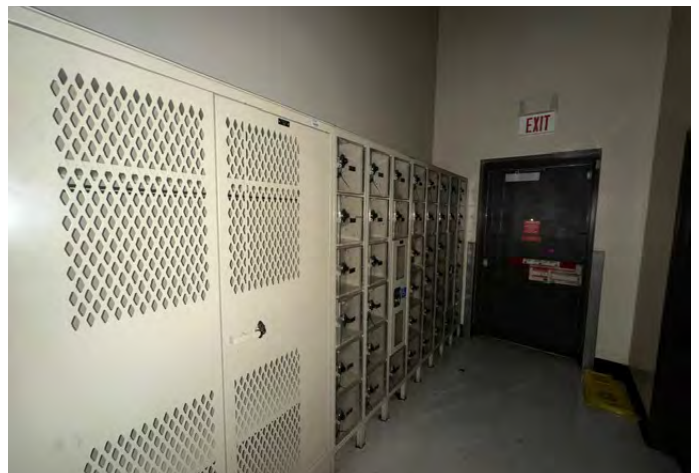
PATRICK BARRY
ASSOCIATE BROKER
pbarry@cbcgeorgia.com
Cell: (478) 718-1806



**COLDWELL BANKER
COMMERCIAL**
EBERHARDT & BARRY

SALE

1100 BALL ST
PERRY, GA



CLAY MOORE
SALES ASSOCIATE
cmoore@cbcgeorgia.com
Cell: (478) 508-8852

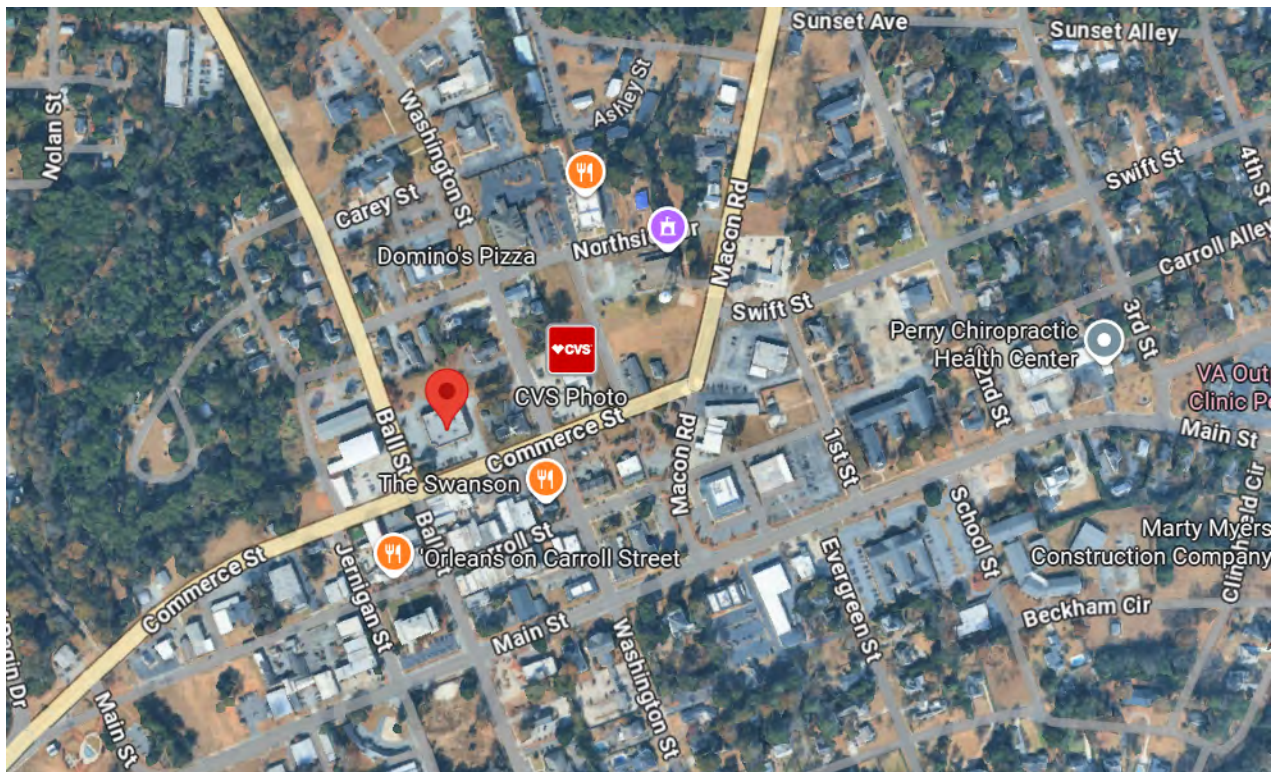
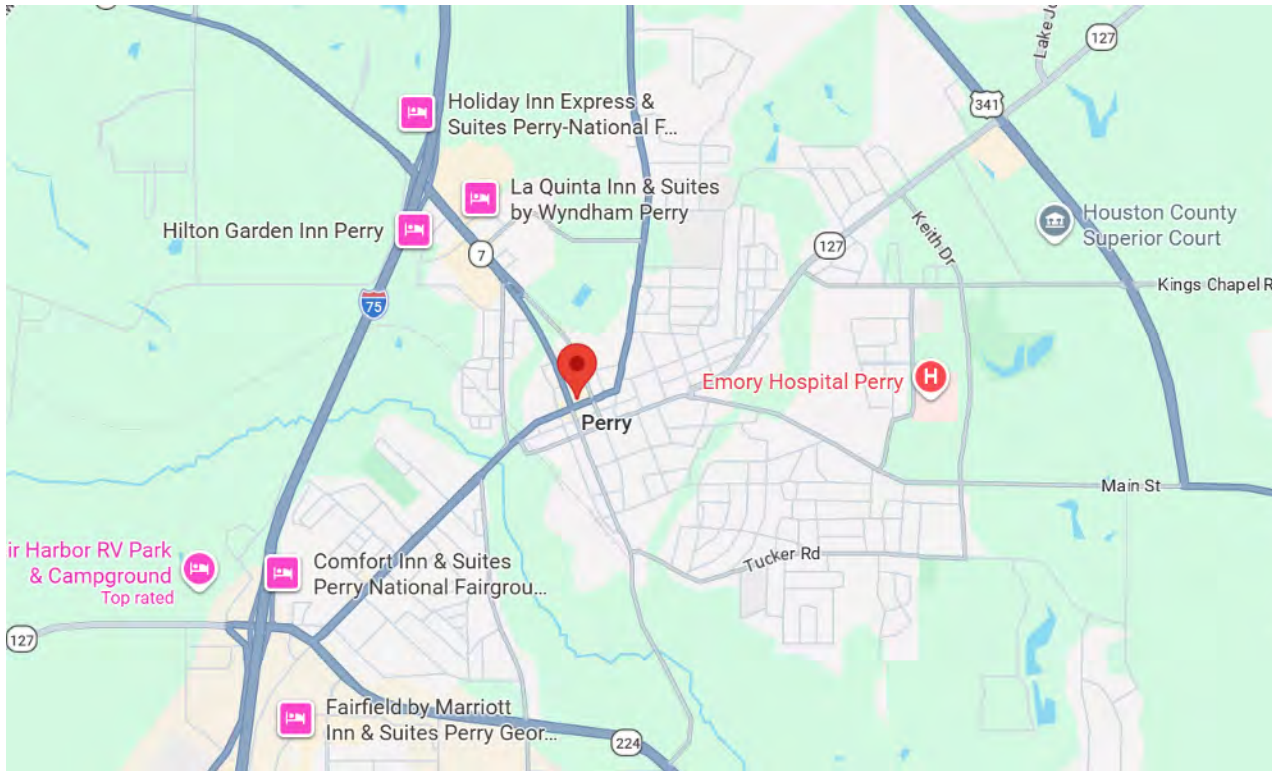
PATRICK BARRY
ASSOCIATE BROKER
pbarry@cbcgeorgia.com
Cell: (478) 718-1806



**COLDWELL BANKER
COMMERCIAL**
EBERHARDT & BARRY

SALE

1100 BALL ST
PERRY, GA



CLAY MOORE
SALES ASSOCIATE
cmoore@cbcgeorgia.com
Cell: (478) 508-8852

PATRICK BARRY
ASSOCIATE BROKER
pbarry@cbcgeorgia.com
Cell: (478) 718-1806



COLDWELL BANKER
COMMERCIAL
EBERHARDT & BARRY

Infographics

5 mile radius

KEY FACTS

25,001

Population



Average Household Size

38.7

Median Age

\$73,930

Median Household Income

EDUCATION

5%

No High School Diploma



31%

High School Graduate



34%

Some College



30%

Bachelor's/Grad/Prof Degree

BUSINESS



806

Total Businesses



15,352

Total Employees

EMPLOYMENT



White Collar

66%



Blue Collar

21%



Services

13%

3.6%

Unemployment Rate

INCOME



\$73,930

Median Household Income



\$35,058

Per Capita Income



\$200,214

Median Net Worth

2025 Households By Income (Esri)

The largest group: \$50,000 - \$74,999 (16.8%)

The smallest group: \$200,000+ (4.9%)

Indicator ▲	Value	Diff	
<\$15,000	10.7%	+2.5%	█
\$15,000 - \$24,999	7.2%	+2.4%	█
\$25,000 - \$34,999	6.6%	0	█
\$35,000 - \$49,999	9.4%	-1.1%	█
\$50,000 - \$74,999	16.8%	-0.2%	█
\$75,000 - \$99,999	16.5%	+2.8%	█
\$100,000 - \$149,999	16.3%	-6.2%	█
\$150,000 - \$199,999	11.7%	+1.4%	█

Bars show deviation from Houston County

CLAY MOORE
SALES ASSOCIATE
cmoore@cbcgeorgia.com
Cell: (478) 508-8852

PATRICK BARRY
ASSOCIATE BROKER
pbarry@cbcgeorgia.com
Cell: (478) 718-1806



**COLDWELL BANKER
COMMERCIAL**
EBERHARDT & BARRY